

Postgraduate Certificate Landscape Design



Postgraduate Certificate Landscape Design

- » Modality: online
- » Duration: 6 weeks
- » Certificate: TECH Technological University
- » Dedication: 16h/week
- » Schedule: at your own pace
- » Exams: online

Website: www.techtitute.com/us/engineering/postgraduate-certificate/landscape-design

Index

01

Introduction

p. 4

02

Objectives

p. 8

03

Course Management

p. 12

04

Structure and Content

p. 16

05

Methodology

p. 20

06

Certificate

p. 28

01

Introduction

Since ancient times, man has experimented with how to modify nature to create new forms, to express himself and to reflect his aesthetic and cultural values through landscaping. Therefore, this discipline is directly related to Architecture, as it requires great skills to observe, design and shape nature, as well as to integrate it into space. Therefore, architects have delved deeply into this area, managing to generate an impact in the environmental sense. That is why this program has been created, which will provide exclusive content regarding the integration of landscape management strategies and practices to preserve the health and beauty of natural environments. All this with the support of audiovisual resources that will provide a sense of dynamism in the course.





“

Thanks to this program you will contribute to the sustainability of the planet with the contribution of innovative strategies and practices of landscape management”

Currently, landscaping is a method for creating collective works of art, oriented to the maximum expression of cultural and aesthetic value, i.e., modifying environments that integrate gardens with urban, metropolitan and regional landscapes. In this way, experts in architecture have implemented methods for the care of the environment and, at the same time, exercise observation and design to give shape to nature itself and integrate it into the space that surrounds us.

That is why the studies in this area of art and science have been integrated and have advanced, allowing to complement each other. For this reason, the professional in this field of study must be up to date with updates on this sector of Architecture. In this way, this Postgraduate Certificate will provide the graduate with innovative skills and tools in Landscape Design and the delve into concepts such as visual and sensitive elements.

Students will acquire knowledge in different areas related to the development of skills in visual representation and graphic communication in the field of Landscape Architecture. On the other hand, this program has a highly qualified and experienced teaching team, in addition to the support of multimedia material of high standards and a load of 150 hours that can be distributed in any way to present their sessions at any time.

In this way, TECH Technological University focuses on excellence and dynamism, so this program provides the most recent innovations in the sector, positioning its students at the top of the academic ladder at the end of the course. Therefore, the professional will only need an electronic device with Internet coverage, being able to access the virtual platform without any problem from the comfort of the place where he is.

This **Postgraduate Certificate in Landscape Design** contains the most complete and up-to-date program on the market. The most important features include:

- ◆ The development of case studies presented by experts in Engineering focused on Landscape Architecture
- ◆ The graphic, schematic, and practical contents with which they are created, provide scientific and practical information on the disciplines that are essential for professional practice
- ◆ Practical exercises where the self-assessment process can be carried out to improve learning
- ◆ Its special emphasis on innovative methodologies
- ◆ Theoretical lessons, questions to the expert, debate forums on controversial topics, and individual reflection work
- ◆ Content that is accessible from any fixed or portable device with an Internet connection



Landscape Architecture is considered both an art and a science, modifying spaces while preserving the natural environment”

“

With TECH Technological University and this Postgraduate Certificate you will be up to date with the most recent developments in the field of Landscape Architecture”

In this Postgraduate Certificate you will obtain skills and exclusive content in the area of Landscape Design. Enroll now.

TECH Technological University implements in this program the 100% online modality, giving you the flexibility you need: no schedules or face-to-face classes.

The program's teaching staff includes professionals from the sector who contribute their work experience to this training program, as well as renowned specialists from leading societies and prestigious universities.

Its multimedia content, developed with the latest educational technology, will allow the professional a situated and contextual learning, that is, a simulated environment that will provide an immersive training programmed to train in real situations.

The design of this program focuses on Problem-Based Learning, by means of which the professional must try to solve the different professional practice situations that are presented throughout the academic course. For this purpose, the student will be assisted by an innovative interactive video system created by renowned experts.



02 Objectives

With this Postgraduate Certificate in Landscape Design, the student will acquire the necessary skills, combining the novelties of the profession and the challenges of the same in the area of Landscape Architecture. Likewise, the graduate will have at his disposal a variety of first class material, therefore ensuring the success of the academic program. By the time the program is completed, students will have nurtured their knowledge of design elements, such as color, form and texture, to create harmonious landscape compositions.





“

You will have at your fingertips multiple contents that will help you continue growing in the field of Landscape Architecture”



General Objectives

- ◆ Deepen in the concepts and advanced principles of design applied to Landscape
- ◆ Develop visual representation and graphic communication skills in the field of Landscape Architecture
- ◆ Delve into the planning and execution of design projects in Landscape Architecture
- ◆ Approach different strategies for ecological conservation and restoration
- ◆ Differentiate and manage the processes of construction and execution of Landscape Architecture projects
- ◆ Integrate Landscape management strategies and practices to preserve the health and beauty of natural and built environments





Specific Objectives

- ◆ Incorporate the fundamental principles of design as applied to the Landscape
- ◆ Develop site analysis skills to evaluate the natural and built features of a site
- ◆ Delve into design elements, such as color, form, and texture, to create harmonious landscape compositions
- ◆ Integrate natural and built elements in landscape design
- ◆ Define graphic representation tools and techniques to communicate design ideas and concepts
- ◆ Analyze examples of Landscape Architecture design projects and understand their development process



Improving your skills will propel your professional and personal career to the top and this Postgraduate Certificate is the first step to achieve it"

03

Course Management

Being at the forefront is part of TECH Technological University, offering an elite education for the professional who decides to continue training in his professional career, since it has a great support in didactic tools that achieve the successful development of each one of its programs. In this sense, the graduate will have access to a content created with the requirements of a teaching staff specialized in Landscape Management and Design, Planning and Development of hotel infrastructures, housing, public parks and Mathematics. His vast experience and extensive background in the sector will allow him to resolve any doubts that may arise during the course of the program.



“

TECH Technological University integrates a professional team of the highest level and specialized in architecture and landscape projects”

Management



D. Libroero López, Ricardo

- ◆ CEO and founder of GreenerLand
- ◆ Technical Director of the Atlantic Botanical Garden of Gijón
- ◆ Coordinator of landscape projects at the Universal Exposition of Seville in 1992
- ◆ Postgraduate Certificate in Management and Landscape Design by the Complutense University of Madrid
- ◆ Member of the Spanish Association of Landscape

Professors

D. Camargo Casali, Daniel

- ◆ CEO and founder of D + D Solutions
- ◆ Architect in the development team of the Master Plan of Contents of the EXPO ANTALYA
- ◆ Designer and collaborator of ABBSOLUTE GROUP
- ◆ Architect Designer of the Martyr's Memorial Project in Amman, Jordan
- ◆ Architect in the elaboration of the Master Plan for the Universal Exposition of Seville in 1992
- ◆ Graduate in Architecture from the University of Buenos Aires

D. Manrique Álamos, Antonio Manuel

- ◆ Co-founder of the Association "Salva tus Árboles" Seville
- ◆ Responsible for the databases where the tree grove of the city of Seville is supervised
- ◆ Professor of Mathematics for Secondary Education in the State Teaching Corps
- ◆ Degree in Mathematics from the University of Seville



04

Structure and Content

This academic program provides a syllabus that integrates innovative content in Landscape Design, according to the continuing studies in the field of Landscape Architecture. This Postgraduate Certificate is aimed for the student, who will have advanced material on mathematics in nature focused on the Golden Ratio and the Fibonacci series. All this through the wide variety of audiovisual tools that only TECH Technological University offers to provide greater dynamism in the process of this university program.

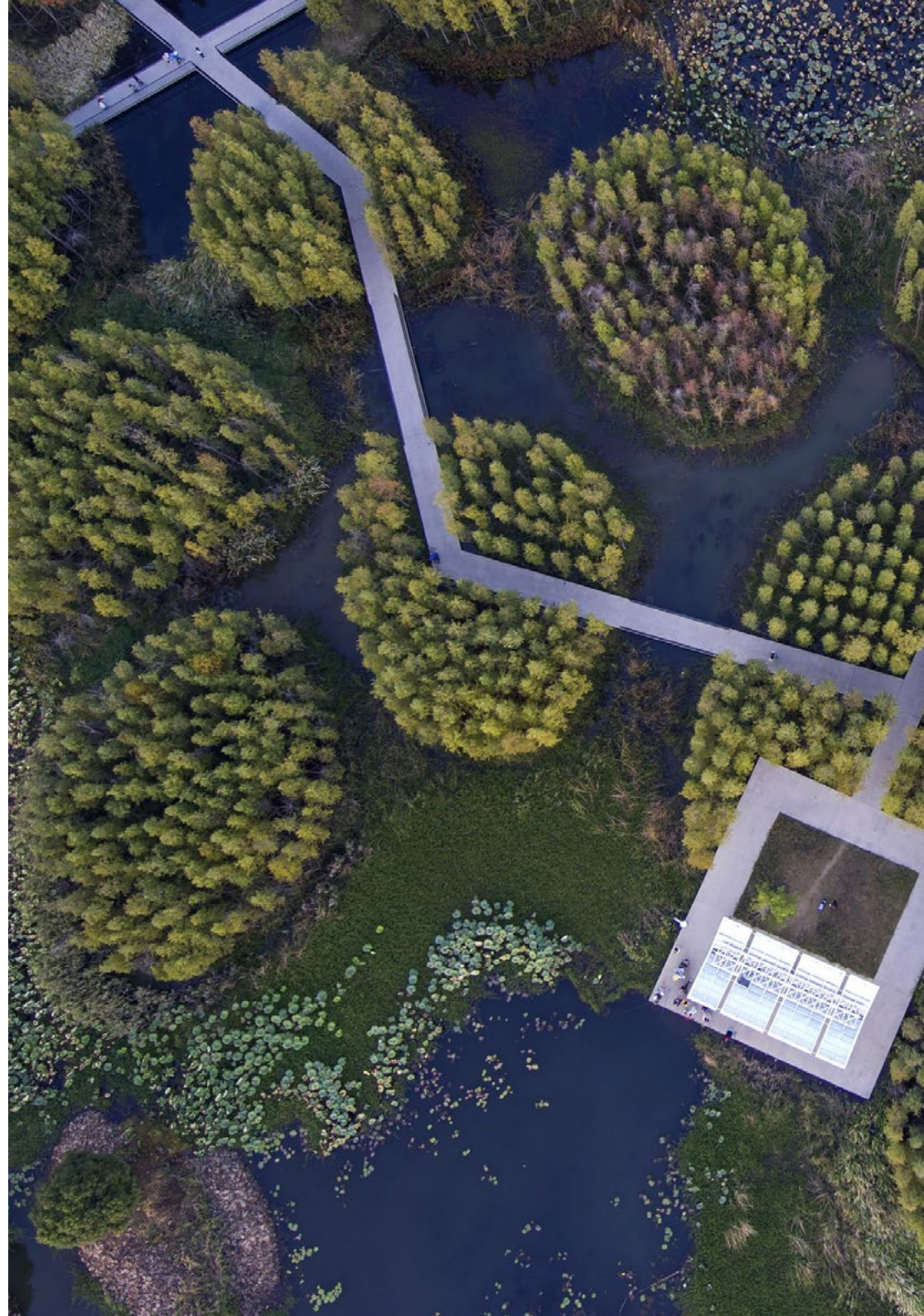


“

You will have access to advanced content on mathematics in Architecture and Landscape, as well as dozens of hours of multidisciplinary material to expand on each section”

Module 1. Landscape of Architecture Design

- 1.1. Visual Elements
 - 1.1.1. Point
 - 1.1.2. Line
 - 1.1.3. The Shot
 - 1.1.4. The Shape. Volume
 - 1.1.5. Movement
 - 1.1.6. Color
 - 1.1.7. Texture
- 1.2. Sensitive Elements
 - 1.2.1. Sound
 - 1.2.2. Fragrance
 - 1.2.3. Touch
- 1.3. Time
 - 1.3.1. The Forth Dimension
 - 1.3.2. The Element that Differentiates us from the Other Construction Arts
 - 1.3.3. The Growth of Vegetation
 - 1.3.4. Transformation of the Projected Space
- 1.4. Formal Design
 - 1.4.1. Starting from the Square. 90° angles
 - 1.4.2. From Acute or Obtuse Angles
 - 1.4.3. Triangles, Hexagons
 - 1.4.4. From Circles, Arches, Tangents and Spirals
- 1.5. Informal Design
 - 1.5.1. Naturalistic Shapes
 - 1.5.2. Free Ellipses
 - 1.5.3. Free Spirals
 - 1.5.4. Irregular Polygons
 - 1.5.5. Organic Shapes
 - 1.5.6. Fragmentation and Clustering





- 1.6. Principles of Element Organization
 - 1.6.1. Unit
 - 1.6.2. Harmony
 - 1.6.3. Interest
 - 1.6.4. Simplicity
 - 1.6.5. Emphasis-Dominance
 - 1.6.6. Balance
 - 1.6.7. Scale-Proportion
 - 1.6.8. Sequences
- 1.7. The Scale
 - 1.7.1. Scale Construction
 - 1.7.2. Proportion
 - 1.7.3. Appropriate Scales According to Use
 - 1.7.4. Graphic Scale
- 1.8. Mathematics in Nature
 - 1.8.1. The Proportion
 - 1.8.2. Golden Ratio
 - 1.8.3. The Fibonacci Series
- 1.9. Mathematics in Architecture and Landscape Architecture
 - 1.9.1. Alhambra with Mathematics. An Example
 - 1.9.2. Databases for Urban Vegetation Monitoring
 - 1.9.3. An Example
- 1.10. From Pythagoras to Trigonometry
 - 1.10.1. Formulas and Theorems
 - 1.10.2. Application to the Architecture Field
 - 1.10.3. The Landscape

05

Methodology

This academic program offers students a different way of learning. Our methodology uses a cyclical learning approach: **Relearning**.

This teaching system is used, for example, in the most prestigious medical schools in the world, and major publications such as the **New England Journal of Medicine** have considered it to be one of the most effective.



A background image showing a blue technical drawing with a ruler and a compass. The ruler is white with black markings, and the compass is silver. The drawing is on a blue surface with white dashed lines. The image is partially obscured by a white diagonal shape that contains the text.

“

Discover Relearning, a system that abandons conventional linear learning, to take you through cyclical teaching systems: a way of learning that has proven to be extremely effective, especially in subjects that require memorization"

Case Study to contextualize all content

Our program offers a revolutionary approach to developing skills and knowledge. Our goal is to strengthen skills in a changing, competitive, and highly demanding environment.

“

At TECH, you will experience a learning methodology that is shaking the foundations of traditional universities around the world”



You will have access to a learning system based on repetition, with natural and progressive teaching throughout the entire syllabus.



The student will learn to solve complex situations in real business environments through collaborative activities and real cases.

A learning method that is different and innovative

This TECH program is an intensive educational program, created from scratch, which presents the most demanding challenges and decisions in this field, both nationally and internationally. This methodology promotes personal and professional growth, representing a significant step towards success. The case method, a technique that lays the foundation for this content, ensures that the most current economic, social and professional reality is taken into account.

“*Our program prepares you to face new challenges in uncertain environments and achieve success in your career”*

The case method is the most widely used learning system in the best faculties in the world. The case method was developed in 1912 so that law students would not only learn the law based on theoretical content. It consisted of presenting students with real-life, complex situations for them to make informed decisions and value judgments on how to resolve them. In 1924, Harvard adopted it as a standard teaching method.

What should a professional do in a given situation? This is the question that you are presented with in the case method, an action-oriented learning method. Throughout the program, the studies will be presented with multiple real cases. They will have to combine all their knowledge and research, and argue and defend their ideas and decisions.

Relearning Methodology

TECH effectively combines the Case Study methodology with a 100% online learning system based on repetition, which combines 8 different teaching elements in each lesson.

We enhance the Case Study with the best 100% online teaching method: Relearning.

In 2019, we obtained the best learning results of all online universities in the world.

At TECH, you will learn using a cutting-edge methodology designed to train the executives of the future. This method, at the forefront of international teaching, is called Relearning.

Our university is the only one in the world authorized to employ this successful method. In 2019, we managed to improve our students' overall satisfaction levels (teaching quality, quality of materials, course structure, objectives...) based on the best online university indicators.



In our program, learning is not a linear process, but rather a spiral (learn, unlearn, forget, and re-learn). Therefore, we combine each of these elements concentrically.

This methodology has trained more than 650,000 university graduates with unprecedented success in fields as diverse as biochemistry, genetics, surgery, international law, management skills, sports science, philosophy, law, engineering, journalism, history, and financial markets and instruments. All this in a highly demanding environment, where the students have a strong socio-economic profile and an average age of 43.5 years.

Relearning will allow you to learn with less effort and better performance, involving you more in your training, developing a critical mindset, defending arguments, and contrasting opinions: a direct equation for success.

From the latest scientific evidence in the field of neuroscience, not only do we know how to organize information, ideas, images and memories, but we know that the place and context where we have learned something is fundamental for us to be able to remember it and store it in the hippocampus, to retain it in our long-term memory.

In this way, and in what is called neurocognitive context-dependent e-learning, the different elements in our program are connected to the context where the individual carries out their professional activity.



This program offers the best educational material, prepared with professionals in mind:



Study Material

All teaching material is produced by the specialists who teach the course, specifically for the course, so that the teaching content is highly specific and precise.

These contents are then applied to the audiovisual format, to create the TECH online working method. All this, with the latest techniques that offer high quality pieces in each and every one of the materials that are made available to the student.



Classes

There is scientific evidence suggesting that observing third-party experts can be useful.

Learning from an Expert strengthens knowledge and memory, and generates confidence in future difficult decisions.



Practising Skills and Abilities

They will carry out activities to develop specific skills and abilities in each subject area. Exercises and activities to acquire and develop the skills and abilities that a specialist needs to develop in the context of the globalization that we are experiencing.



Additional Reading

Recent articles, consensus documents and international guidelines, among others. In TECH's virtual library, students will have access to everything they need to complete their course.





Case Studies

Students will complete a selection of the best case studies chosen specifically for this program. Cases that are presented, analyzed, and supervised by the best specialists in the world.



Interactive Summaries

The TECH team presents the contents attractively and dynamically in multimedia lessons that include audio, videos, images, diagrams, and concept maps in order to reinforce knowledge.

This exclusive educational system for presenting multimedia content was awarded by Microsoft as a "European Success Story".



Testing & Retesting

We periodically evaluate and re-evaluate students' knowledge throughout the program, through assessment and self-assessment activities and exercises, so that they can see how they are achieving their goals.



06

Certificate

The Postgraduate Certificate in Landscape Design guarantees students, in addition to the most rigorous and up-to-date education, access to a Postgraduate Certificate issued by TECH Technological University.



“

*Successfully complete this program
and receive your university qualification
without having to travel or fill out
laborious paperwork”*

This **Postgraduate Certificate in Landscape Design** contains the most complete and up-to-date program on the market.

After the student has passed the assessments, they will receive their corresponding **Postgraduate Certificate** issued by **TECH Technological University** via tracked delivery*.

The diploma issued by **TECH Technological University** will reflect the qualification obtained in the Postgraduate Certificate, and meets the requirements commonly demanded by labor exchanges, competitive examinations, and professional career evaluation committees.

Title: **Postgraduate Certificate in Landscape Design**

Official N° of hours: **150 h.**



*Apostille Convention. In the event that the student wishes to have their paper diploma issued with an apostille, TECH EDUCATION will make the necessary arrangements to obtain it, at an additional cost.



Postgraduate Certificate Landscape Design

- » Modality: online
- » Duration: 6 weeks
- » Certificate: TECH Technological University
- » Dedication: 16h/week
- » Schedule: at your own pace
- » Exams: online

Postgraduate Certificate Landscape Design

