

# Postgraduate Certificate Construction Work Closure and Settlement





## Postgraduate Certificate Construction Work Closure and Settlement

- » Modality: online
- » Duration: 6 weeks
- » Certificate: TECH Technological University
- » Dedication: 16h/week
- » Schedule: at your own pace
- » Exams: online

Website: [www.techtute.com/in/engineering/postgraduate-certificate/construction-work-closure-settlement](http://www.techtute.com/in/engineering/postgraduate-certificate/construction-work-closure-settlement)

# Index

01

[Introduction](#)

---

*p. 4*

02

[Objectives](#)

---

*p. 8*

03

[Course Management](#)

---

*p. 12*

04

[Structure and Content](#)

---

*p. 16*

05

[Methodology](#)

---

*p. 20*

06

[Certificate](#)

---

*p. 28*

# 01

# Introduction

The Construction Work Closure and Settlement process is one of the most important phases of the Construction Work in the administrative field, since, if it is not carried out correctly, it can increase its cost. On this occasion, TECH offers a training of the highest level that will enable the student for the settlement and closure of the works and that will elevate him/her to the forefront of civil engineering. Don't think twice and give your career a boost by joining our alumni community.





“

*The Construction Work Closure and Settlement process is essential to avoid last minute cost overruns and to account for the quality and environmental friendliness of each Construction Work”*

Construction Work Closure and Settlement is a very important point in the execution of an engineering Construction Work, since an inadequate closure can result in a cost overrun at the time of closure and another deferred over time that can worsen the economic result of the work.

Therefore, it is important that the site manager is able to perform a correct closure. For this, the necessary knowledge will be transmitted to foresee during the development of the works the information that must be collected and processed, with the objective of advancing the work necessary to prepare a work liquidation.

Likewise, this Postgraduate Certificate will teach how to use the latest technology in order to carry out the necessary measurements and the most appropriate software for the processing of data obtained in the field and in the office.

Since the closing of the Construction Work should not only be approached from an economic point of view, this Postgraduate Certificate will also cover the administrative documentation that must be ready for the settlement of the Construction Work. This documentation covers quality and environmental issues.

Therefore, it is very important for the student to know all the administrative files that can be generated after the closing of the construction work. To address this issue, professionals will be trained in the need to structure and organize documentation so that other people can access and understand this information.

In short, TECH takes the student through theoretical and practical knowledge to a higher level of teaching, and shows him a more organic, simpler and efficient way of studying and learning. TECH works to keep him motivated and to create in him a passion for learning. And we will push you to think and develop critical thinking.

This Postgraduate Certificate is designed to give the student access to the specific knowledge of this discipline in an intensive and practical way. A great value for any professional.

It should be noted that since it is a 100% online Postgraduate Certificate, the student is not conditioned by fixed schedules or the need to move to another physical location, but can access the contents at any time of the day, balancing their work or personal life with their academic life.

This **Postgraduate Certificate in Construction Work Closure and Settlement** contains the most complete and up-to-date educational program on the market. The most important features include:

- » The development of case studies presented by experts in infrastructure and civil engineering
- » The graphic, schematic, and practical contents with which they are created, provide scientific and practical information on the disciplines that are essential for professional practice
- » Practical exercises where the self-assessment process can be carried out to improve learning
- » Special emphasis on innovative methodologies in safety, health and PACMA
- » Theoretical lessons, questions to the expert, debate forums on controversial topics, and individual reflection assignments
- » Access to content from any fixed or portable device with an Internet connection



*The completion of this Postgraduate Certificate will place civil engineering professionals at the forefront of the latest developments in the sector"*





*This Program is the best investment you can make in selecting an up-to-date program in the field of civil engineering. We offer you quality and free access to content”*

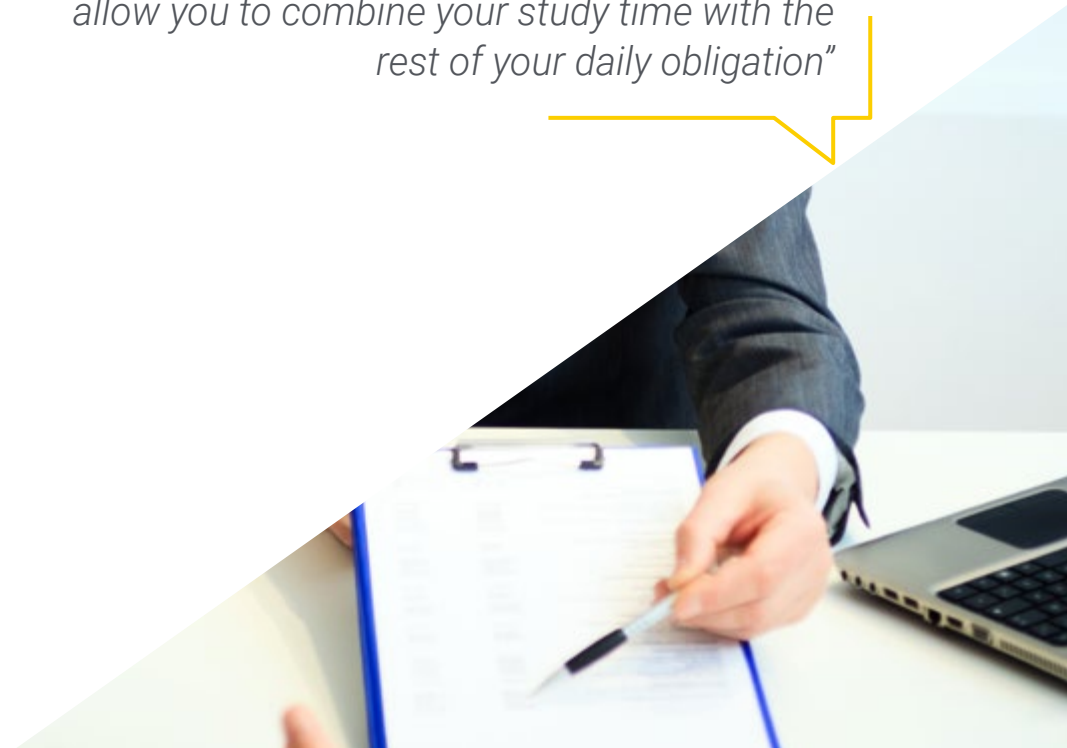
It includes, in its teaching staff, professionals belonging to the field of civil engineering, who bring to this training the experience of their work, in addition to recognized specialists from prestigious reference societies and universities.

The multimedia content, developed with the latest educational technology, will provide the professional with situated and contextual learning, i.e., a simulated environment that will provide immersive training programmed to train in real situations.

This program is designed around Problem-Based Learning, whereby the professional must try to solve the different professional practice situations that arise during the academic year. To do so, the professional will be assisted by an innovative interactive video system created by renowned and experienced Construction Work Closure and Settlement experts.

*This training comes with the best didactic material, providing you with a contextual approach that will facilitate your learning”*

*We offer you a 100% online TECH that will allow you to combine your study time with the rest of your daily obligation”*



# 02

# Objectives

The Postgraduate Certificate in Construction Work Closure and Settlement is aimed at facilitating the professional's performance so that they can acquire and know the main novelties in this field, which will allow them to practice their profession with the highest quality and professionalism.







“

*Our goal is to make you the best professional in your sector. And for this we have the best methodology and content"*



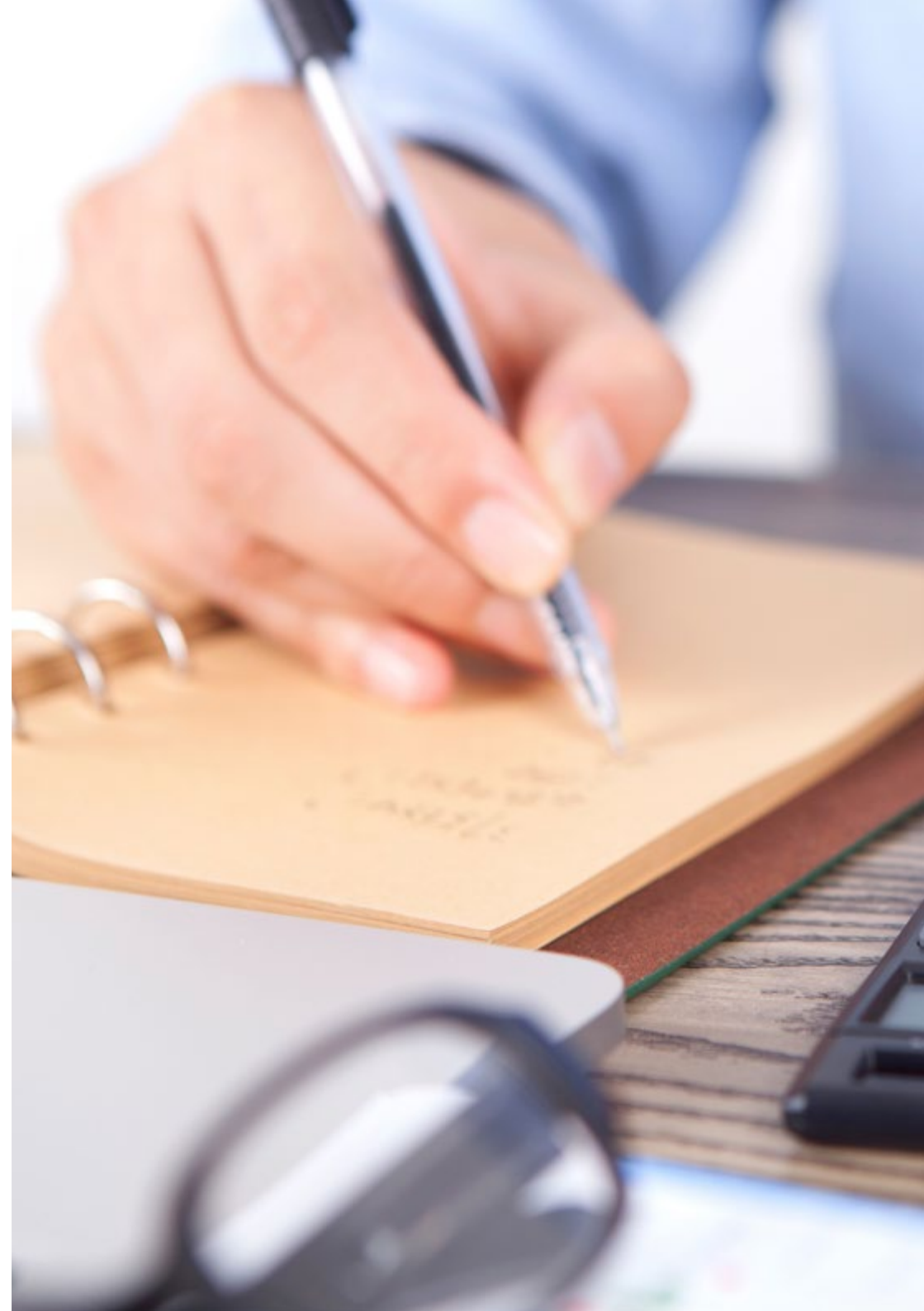
## General Objectives

---

- » Acquire new knowledge in Civil Engineering and Infrastructures
- » Acquire new skills in terms of new technologies, latest machinery and software, knowledge of next steps and recycling
- » Extrapolate this knowledge to other sectors of the industry, focusing on those fields that require more trained and qualified personnel year after year
- » Processing the data generated in Civil Engineering activities, through the BIM environment, a mandatory reality for the drafting, construction, management and operation of infrastructures

“

*Improving your skills in the field of civil engineering will allow you to be more competitive. Continue your training and give your career a boost”*





## Specific Objectives

---

- » Prepare the necessary documentation for the preparation of the liquidation and closing of the work
- » Training in general construction site measurements
- » Know the latest tools available for the realization of field measurements. field measurements
- » Develop knowledge of the methods for closing open nonconformities during the course of the Construction Work
- » Detect and create conflicting prices
- » Training in negotiation for the discussion with the client for the economic closure of the work
- » Follow up and open additional files in addition to the work itself, such as price revisions



04

# Course Management

TECH has professionals specialized in each area of knowledge, who pour into our training the experience of their work. People of recognized prestige in their area of expertise who have joined forces to offer the best training in the market.





“

*Our university employs the best professionals in all areas who share their knowledge to help you"*



## Management



### Mr. Uriarte Alonso, Mario

- Civil Engineer from the University of Cantabria.
- Professional Master's Degree in Oceanographic Engineering
- 17 years of experience in the field of construction execution, having worked as construction manager in works of highways, airports, ports, canals, railways and hydroelectric works.
- In the engineering field, he is the CEO of CANDOIS INGENIEROS CONSULTORES SL, a business dedicated to the drafting of projects and construction management.



### Mr. Torres Torres, Julián

- Civil Engineer, University of Granada.
- Professional Master's Degree in Structures
- 14 years of experience in the field of construction execution, having worked as construction manager in road, urbanization and WWTP works.
- In the engineering field, he has developed his work as an independent freelance and as technical director at CANDOIS INGENIEROS CONSULTORES SL.



## Professors

### Mr. Gómez Martín, Carlos

- » Civil Engineer of Roads, Canals and Ports
- » Professional Master's Degree in Civil Engineering BIM
- » 13 years of experience in the field of construction execution, executing airport and industrial works
- » Develops specialized work with the BIM environment

“

*Format in the world's  
leading private  
online university”*

03

# Structure and Content

The structure of the contents has been designed by the best professionals in the civil engineering sector, with extensive experience and recognized prestige in the profession, and aware of the benefits that the latest educational technology can bring to higher education.





“

*We have the most complete and up-to-date academic program in the market. We strive for excellence and for you to achieve it too"*



## Module 1. Construction Work CLOSURE and SETTLEMENT

- 1.1 Pre-Completion Work
  - 1.1.1. Monthly Follow-up of Work Measurements
  - 1.1.2. Monthly Follow-up of Nonconformities
  - 1.1.3. Monthly Follow-up of New Construction Work Items
  - 1.1.4. Administrative Management in the Event of Modifications
- 1.2. Final Measurement of the Work
  - 1.2.1. Participants in the Final Measurement of the Work
  - 1.2.2. Planning for the Final Measurement of the Work
  - 1.2.3. Coordination of Site Measurements
  - 1.2.4. Discussion with the Client of the Final Measurement of the Work.
- 1.3. Review of Final Construction Plans
  - 1.3.1. Control of Current Plans
  - 1.3.2. Final Drawing of Plans
  - 1.3.3. Presentation of *As Built* Plans
- 1.4. Review of Nonconformities
  - 1.4.1. Follow-up and Closure of Nonconformities throughout the Development of the Work
  - 1.4.2. Importance of Nonconformities
  - 1.4.3. Final Review of Nonconformities Generated During the Construction Work
- 1.5. Negotiation of Contradictory Prices
  - 1.5.1. Definition of Contradictory Pricing
  - 1.5.2. Negotiation of Contradictory Price
  - 1.5.3. Contradictory Price Closing
- 1.6. Negotiation of Economic and Legal Closing of the Work
  - 1.6.1. Summary of Data for Site Closure
  - 1.6.2. Economic Negotiation for the Closing of the Work
  - 1.6.3. Legal and Administrative Closing of Work
  - 1.6.4. Current Records in Process





- 1.7. Adequacy of Affected Areas of the Construction Site
  - 1.7.1. Definition of Areas Affected During the Development of Works
  - 1.7.2. Measures Taken Throughout the Execution of the Works
  - 1.7.3. Measures in Affected Areas for the Closure of the Construction Site
  - 1.7.4. Final Restoration of the Work
- 1.8. Minutes of Receipt
  - 1.8.1. Works Acceptance Ceremony
  - 1.8.2. Figure of the Controller
  - 1.8.3. Works Acceptance Report
- 1.9. Removal and Cleaning of Facilities Areas
  - 1.9.1. Withdrawal of Installations Area
  - 1.9.2. Cleaning of Areas Affected by the Works
  - 1.9.3. Removal of Site Equipment
- 1.10. Subsequent Files (Price Revisions and Possible Claims)
  - 1.10.1. Types of Files after the Works Have Been Received
  - 1.10.2. Price Revisions
  - 1.10.3. Claim Files
  - 1.10.4. Final Closure of the Work File

“ *A comprehensive and multidisciplinary program that will allow you to excel in your career, following the latest advances in the field of Civil Engineering*”

# 04

# Methodology

This academic program offers students a different way of learning. Our methodology uses a cyclical learning approach: **Relearning**.

This teaching system is used, for example, in the most prestigious medical schools in the world, and major publications such as the **New England Journal of Medicine** have considered it to be one of the most effective.





“

*Discover Relearning, a system that abandons conventional linear learning, to take you through cyclical teaching systems: a way of learning that has proven to be extremely effective, especially in subjects that require memorization"*

## Case Study to contextualize all content

Our program offers a revolutionary approach to developing skills and knowledge. Our goal is to strengthen skills in a changing, competitive, and highly demanding environment.

“

*At TECH, you will experience a learning methodology that is shaking the foundations of traditional universities around the world”*



*You will have access to a learning system based on repetition, with natural and progressive teaching throughout the entire syllabus.*





*The student will learn to solve complex situations in real business environments through collaborative activities and real cases.*

### A learning method that is different and innovative

This TECH program is an intensive educational program, created from scratch, which presents the most demanding challenges and decisions in this field, both nationally and internationally. This methodology promotes personal and professional growth, representing a significant step towards success. The case method, a technique that lays the foundation for this content, ensures that the most current economic, social and professional reality is taken into account.

“*Our program prepares you to face new challenges in uncertain environments and achieve success in your career”*

The case method is the most widely used learning system in the best faculties in the world. The case method was developed in 1912 so that law students would not only learn the law based on theoretical content. It consisted of presenting students with real-life, complex situations for them to make informed decisions and value judgments on how to resolve them. In 1924, Harvard adopted it as a standard teaching method.

What should a professional do in a given situation? This is the question that you are presented with in the case method, an action-oriented learning method. Throughout the program, the studies will be presented with multiple real cases. They will have to combine all their knowledge and research, and argue and defend their ideas and decisions.



## Relearning Methodology

TECH effectively combines the Case Study methodology with a 100% online learning system based on repetition, which combines 8 different teaching elements in each lesson.

We enhance the Case Study with the best 100% online teaching method: Relearning.

*In 2019, we obtained the best learning results of all online universities in the world.*



At TECH, you will learn using a cutting-edge methodology designed to train the executives of the future. This method, at the forefront of international teaching, is called Relearning.

Our university is the only one in the world authorized to employ this successful method. In 2019, we managed to improve our students' overall satisfaction levels (teaching quality, quality of materials, course structure, objectives...) based on the best online university indicators.

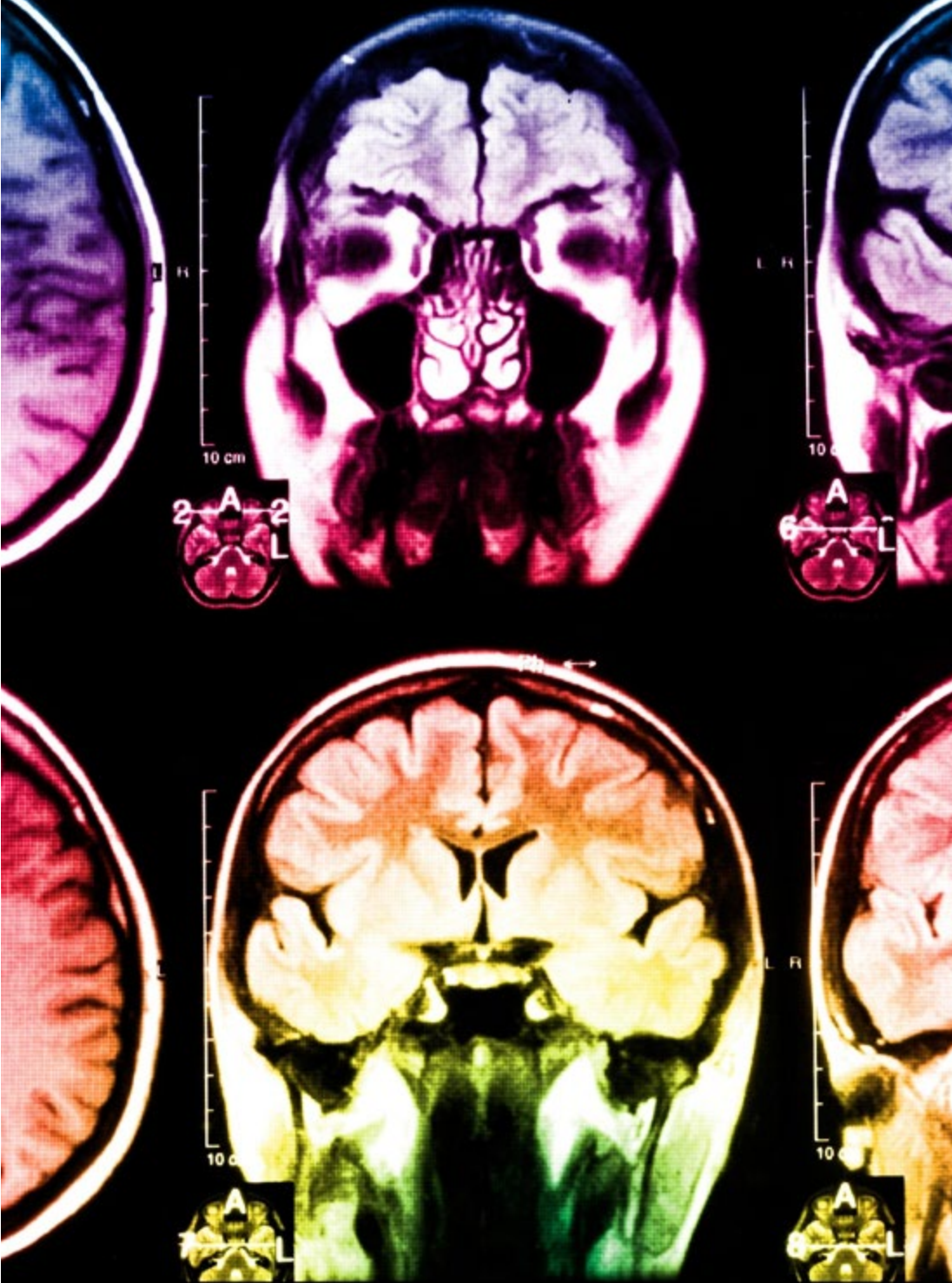
In our program, learning is not a linear process, but rather a spiral (learn, unlearn, forget, and re-learn). Therefore, we combine each of these elements concentrically.

This methodology has trained more than 650,000 university graduates with unprecedented success in fields as diverse as biochemistry, genetics, surgery, international law, management skills, sports science, philosophy, law, engineering, journalism, history, and financial markets and instruments. All this in a highly demanding environment, where the students have a strong socio-economic profile and an average age of 43.5 years.

*Relearning will allow you to learn with less effort and better performance, involving you more in your training, developing a critical mindset, defending arguments, and contrasting opinions: a direct equation for success.*

From the latest scientific evidence in the field of neuroscience, not only do we know how to organize information, ideas, images and memories, but we know that the place and context where we have learned something is fundamental for us to be able to remember it and store it in the hippocampus, to retain it in our long-term memory.

In this way, and in what is called neurocognitive context-dependent e-learning, the different elements in our program are connected to the context where the individual carries out their professional activity.



This program offers the best educational material, prepared with professionals in mind:



### Study Material

All teaching material is produced by the specialists who teach the course, specifically for the course, so that the teaching content is highly specific and precise.

These contents are then applied to the audiovisual format, to create the TECH online working method. All this, with the latest techniques that offer high quality pieces in each and every one of the materials that are made available to the student.



### Classes

There is scientific evidence suggesting that observing third-party experts can be useful.

Learning from an Expert strengthens knowledge and memory, and generates confidence in future difficult decisions.



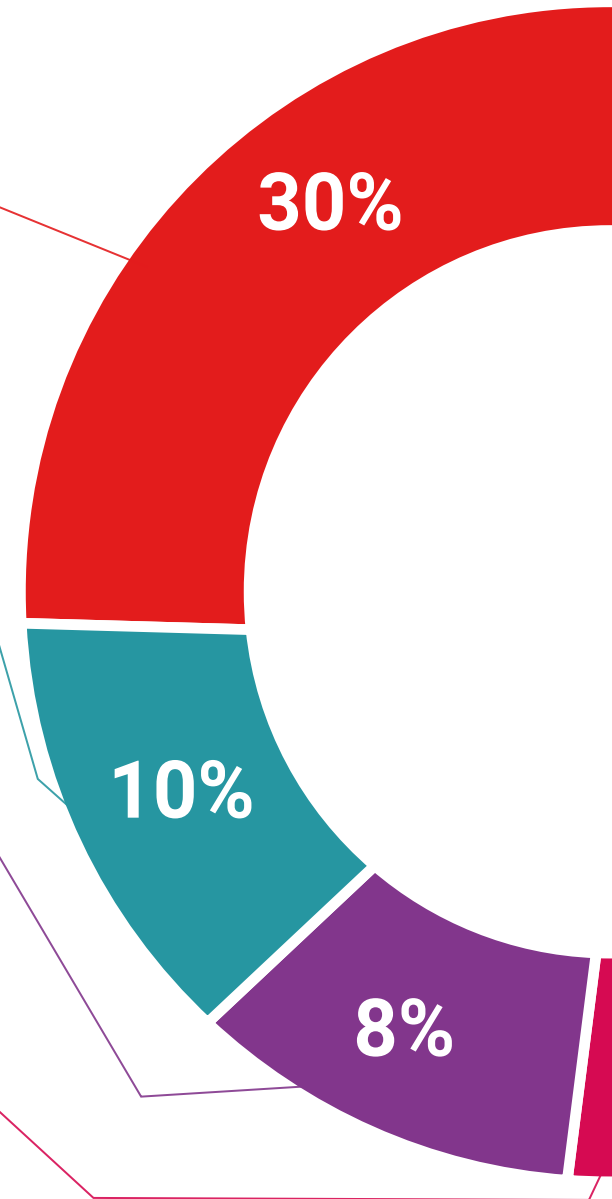
### Practising Skills and Abilities

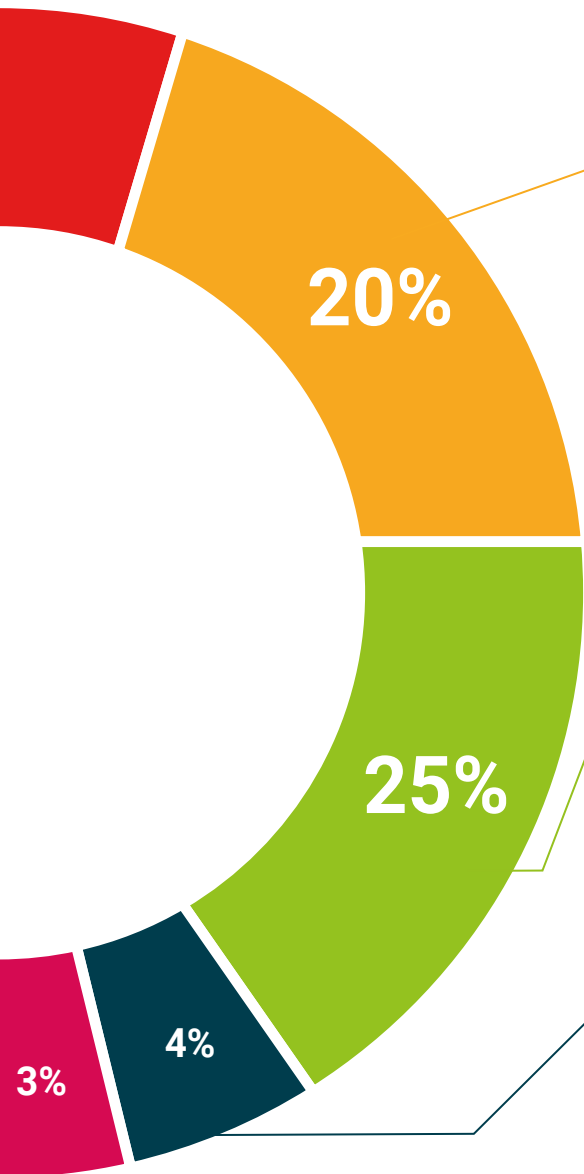
They will carry out activities to develop specific skills and abilities in each subject area. Exercises and activities to acquire and develop the skills and abilities that a specialist needs to develop in the context of the globalization that we are experiencing.



### Additional Reading

Recent articles, consensus documents and international guidelines, among others. In TECH's virtual library, students will have access to everything they need to complete their course.





#### Case Studies

Students will complete a selection of the best case studies chosen specifically for this program. Cases that are presented, analyzed, and supervised by the best specialists in the world.



#### Interactive Summaries

The TECH team presents the contents attractively and dynamically in multimedia lessons that include audio, videos, images, diagrams, and concept maps in order to reinforce knowledge.

This exclusive educational system for presenting multimedia content was awarded by Microsoft as a "European Success Story".



#### Testing & Retesting

We periodically evaluate and re-evaluate students' knowledge throughout the program, through assessment and self-assessment activities and exercises, so that they can see how they are achieving their goals.





05

# Certificate

The Postgraduate Certificate in Construction Work Closure and Settlement guarantees, in addition to the most rigorous and up-to-date training, access to a Postgraduate Certificate issued by TECH Technological University.







“

*Successfully complete this training program  
and receive your university certificate  
without travel or laborious paperwork”*

This **Postgraduate Certificate in Construction Work Closure and Settlement** contains the most complete and up-to-date scientific program on the market.

After the student has passed the assessments, they will receive their corresponding **Postgraduate Certificate**, issued by **TECH Technological University** via tracked delivery\*.

The certificate issued by **TECH Technological University** will reflect the qualification obtained in the **Postgraduate Certificate**, and meets the requirements commonly demanded by job markets, competitive examinations and professional career evaluation committees.

Title: **Postgraduate Certificate in Construction Work Closure and Settlement**

Official N° of Hours: **150 h.**



\*Apostille Convention. In the event that the student wishes to have their paper certificate issued with an apostille, TECH EDUCATION will make the necessary arrangements to obtain it, at an additional cost.

future

health confidence people

education information tutors

guarantee accreditation teaching

institutions technology learning

community commitment

personalized service innovation

knowledge present

online tra

development language

virtual classroom



## Postgraduate Certificate Construction Work Closure and Settlement

- » Modality: **online**
- » Duration: **6 weeks**
- » Certificate: **TECH Technological University**
- » Dedication: **16h/week**
- » Schedule: **at your own pace**
- » Exams: **online**

# Postgraduate Certificate Construction Work Closure and Settlement

