

Postgraduate Certificate

Therapeutic Relationship with the Minor, Assessment and Diagnostic Process in Child and Adolescent Psychopathology





Postgraduate Certificate

Therapeutic Relationship with the Minor, Assessment and Diagnostic Process in Child and Adolescent Psychopathology

- » Modality: online
- » Duration: 6 weeks
- » Certificate: TECH Technological University
- » Schedule: at your own pace
- » Exams: online

Website: www.techtute.com/us/education/postgraduate-certificate/therapeutic-relationship-minor-assessment-diagnostic-process-child-adolescent-psychopathology

Index

01

Introduction

p. 4

02

Objectives

p. 8

03

Structure and Content

p. 12

04

Methodology

p. 16

05

Certificate

p. 24

01

Introduction

The childhood and adolescence stage is vital for the development of the human being, producing in this period important physical and psychological changes that mark the individual. In this process, the relationship of the therapist is key to the detection of any mental health problem, but so is the basic knowledge of the teacher who interacts directly with the minor in the classroom. This 100% online program brings the teaching professional up to date on assessment and diagnosis thanks to innovative multimedia content, provided by an expert teaching team, and which is at the academic forefront.



“

For six weeks, you will be immersed in an intensive course that will allow you to learn the main instruments used in the diagnosis of children with psychopathologies"

Teaching professionals who follow this university program will be able to acquire an exhaustive knowledge of the different techniques and skills that every therapist has in the relationship with the child, always thinking about the success of the therapy itself in this childhood and adolescence stage. A Postgraduate Certificate that will allow students to delve into the assessment tools, the areas that should be taken into account at this stage, as well as the framing of the family system in psychological therapy.

A Postgraduate Certificate where, over six weeks, students will delve into the impact on the process of assessment and diagnosis in Child and Adolescent Psychopathology. An intensive knowledge in charge of a specialized professionals, who will share in this teaching all their experience with the ultimate goal of providing a broad and useful knowledge for the education professional who wants to improve their skills and abilities in the classroom with children who suffer from some kind of psychopathology. Likewise, the innovative teaching material of this university qualification will allow students to acquire a much more agile learning process.

A university program that enables professionals to access the entire syllabus comfortably, from wherever and whenever they want. To do this, they only need a computer, a tablet or a cell phone with Internet connection to access the virtual platform, without attendance or fixed schedules. A flexible education, designed for students who wish to broaden their knowledge while balancing their personal responsibilities with quality education.

This **Postgraduate Certificate in Therapeutic Relationship with the Minor, Assessment and Diagnostic Process in Child and Adolescent Psychopathology** contains the most complete and up-to-date educational program on the market. The most important features include:

- ♦ The development of practical cases presented by experts in Psychology
- ♦ The graphic, schematic, and practical contents with which they are created, provide scientific and practical information on the disciplines that are essential for professional practice
- ♦ Practical exercises where the self-assessment process can be carried out to improve learning
- ♦ Its special emphasis on innovative methodologies
- ♦ Theoretical lessons, questions to the expert, debate forums on controversial topics, and individual reflection assignments
- ♦ Content that is accessible from any fixed or portable device with an Internet connection



*A flexible university education,
with which you will progress
in the relationship with your
students in the classroom"*

“

A university education that will allow you to learn the most appropriate forms of communication for the success of therapy in the child and adolescent stage"

The program's teaching staff includes professionals from the sector who contribute their work experience to this educational program, as well as renowned specialists from leading societies and prestigious universities.

Its multimedia content, developed with the latest educational technology, will allow professionals to learn in a contextual and situated learning environment, i.e., a simulated environment that will provide immersive education programmed to prepare in real situations.

The design of this program focuses on Problem-Based Learning, by means of which professionals must try to solve the different professional practice situations that arise during the academic course. For this purpose students will be assisted by an innovative interactive video system developed by renowned experts.

You will have at your disposal a library of innovative multimedia resources for you to acquire learning that will help you improve as a teacher.

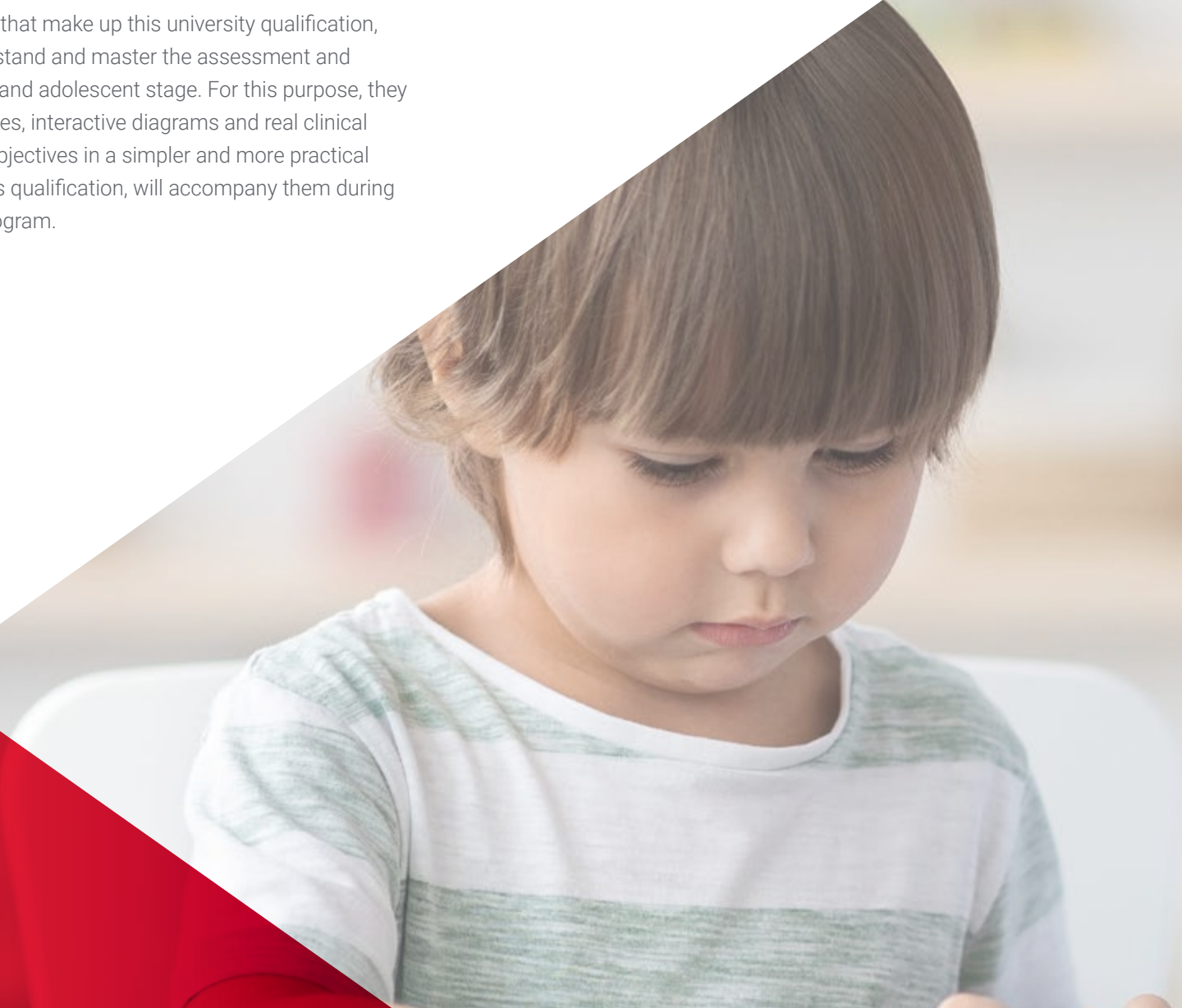
You are in front of a Postgraduate Certificate that you can access with your computer whenever and wherever you want. Enroll now.



02

Objectives

Upon completion of the 150 teaching hours that make up this university qualification, teaching professionals will be able to understand and master the assessment and diagnosis of psychopathologies in the child and adolescent stage. For this purpose, they will have a content based on video summaries, interactive diagrams and real clinical cases that will allow them to achieve their objectives in a simpler and more practical way. Likewise, the faculty that integrates this qualification, will accompany them during the development of this online university program.





“

*Enroll and master the techniques
of assessment and diagnosis with
this Postgraduate Certificate”*



General Objectives

- ♦ Describe the therapeutic bond between the psychotherapist and the minor patient
- ♦ Analyze the changes in behavior during the life cycle
- ♦ Differentiate between the evolutionary adaptation and adaptability of human beings
- ♦ Explain the framing of the family system in a single-therapist, single-patient psychotherapy
- ♦ Master psychodiagnosis and evaluation in the child and adolescent framework
- ♦ Control personality assessment at these ages
- ♦ Identify the role of the family in child and adolescent diagnosis
- ♦ Specify the intervention in clinical psychology at these age groups
- ♦ Develop sufficient management skills in the child and adolescent clinical psychology





Specific Objectives

- ♦ Get to know the process of the therapeutic relationship with the minor in child and adolescent psychology and gain knowledge about the most appropriate forms of communication for the success of therapy in the child and adolescent stage
- ♦ Identify the assessment and clinical diagnosis process used with patients in the child and adolescent stage
- ♦ Study the assessment instruments and the areas of importance to be assessed in the child and adolescent stage
- ♦ Study how the family is involved in therapy with minors



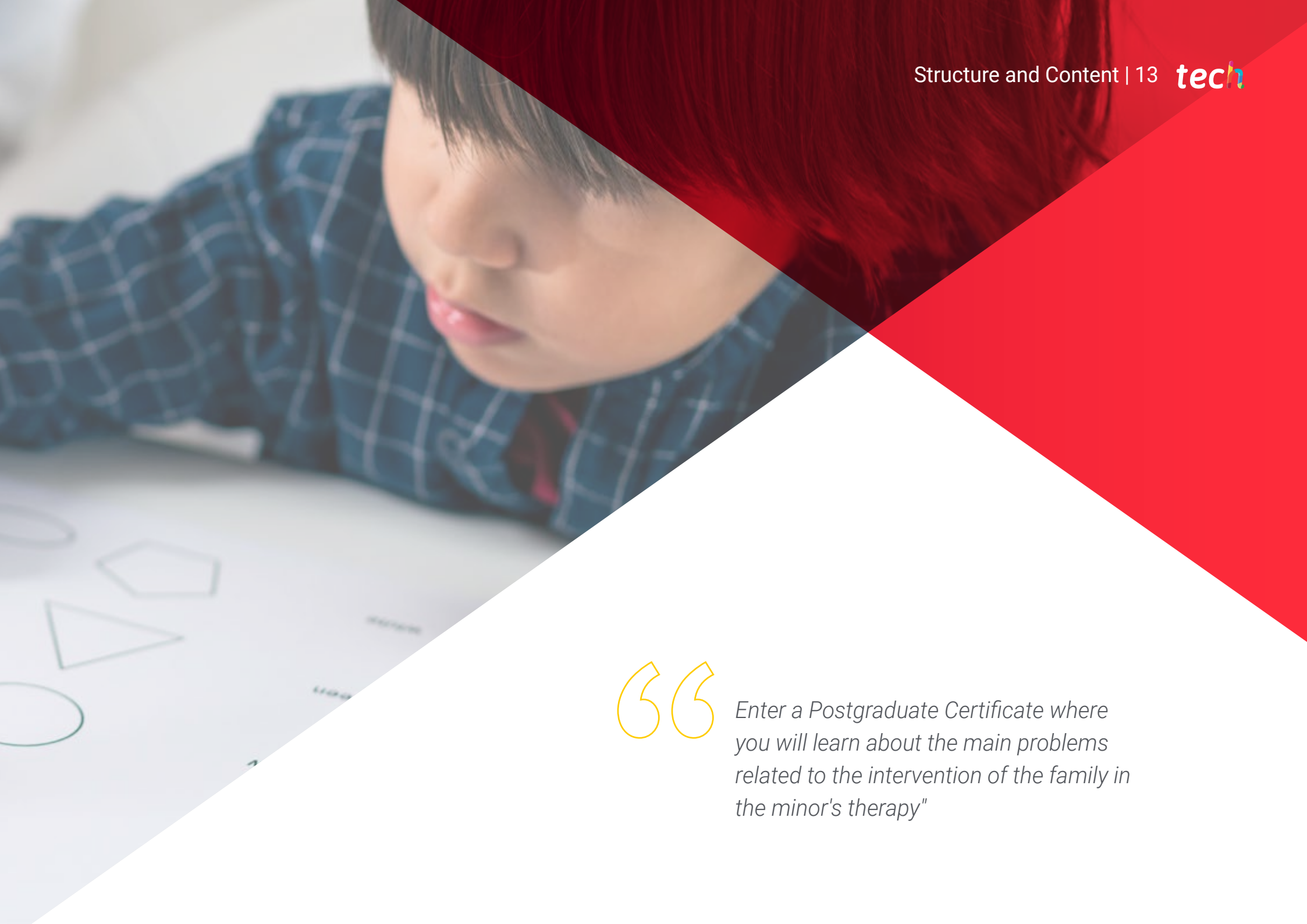
A Postgraduate Certificate that will allow you to be aware of the most common communication and language techniques for the success of psychological therapy with the minors"

03

Structure and Content

The syllabus of this university qualification has been developed by a specialized teaching team, which will contribute all its knowledge to the innovative content to which students will have access. Therefore, throughout the 150 teaching hours that make up this program, teaching professionals will progressively delve into the therapeutic relationship with the child and adolescent, the importance of the family figure, as well as the different techniques and tools used for the assessment and diagnosis of the patient. Students will also be provided with complementary material that will allow them to extend the syllabus and a Relearning system, which will allow them to reduce the long hours of study.





“

Enter a Postgraduate Certificate where you will learn about the main problems related to the intervention of the family in the minor's therapy"

Module 1. Therapeutic Relationship with the Minor, Assessment and Diagnostic Process in Child and Adolescent Psychopathology

- 1.1. Therapeutic Relationship with Children and Adolescents
 - 1.1.1. Infant and Adolescent Characteristics
 - 1.2.2. Establishment of a Therapeutic Alliance with the Minor
 - 1.2.3. Keys in the Therapeutic Relationship
- 1.2. Communication and Language Techniques in the Therapeutic Relationship in Childhood and Adolescence
 - 1.2.1. Importance of Communication and Language Techniques in the Therapeutic Relationship with the Minor
 - 1.2.2. Most Common Communication and Speech Techniques for Successful Psychological Therapy with the Infant
 - 1.2.3. Communication Difficulties in Therapy
- 1.3. Clinical Assessment and Diagnosis Process in Childhood: Phases
 - 1.3.1. The Clinical Assessment Process in the Childhood and Adolescence Stage
 - 1.3.2. Clinical Diagnosis in Childhood and Adolescence
 - 1.3.3. Keys to an Accurate Diagnosis
- 1.4. Areas of Psychological Functioning to be Assessed
 - 1.4.1. Main Areas of Psychological Functioning to be Assessed in the Child and Adolescent Stage
 - 1.4.2. Other Areas of Functioning to be Considered by the Therapist
- 1.5. Diagnostic Objectives
 - 1.5.1. Keys to an Accurate Diagnosis
 - 1.5.2. Main Objectives in the Diagnosis of the Most Common Psychopathologies in Childhood and Adolescence
- 1.6. The Assessment and Diagnostic Process: Means for Assessment and Diagnosis
 - 1.6.1. Interview
 - 1.6.2. Main Instruments Used in the Diagnosis of Psychopathologies in Childhood and Adolescence



- 1.7. Evolution of Assessment and Diagnostic Instruments
 - 1.7.1. Introduction to the Most Common Assessment and Diagnostic Instruments
 - 1.7.2. New Lines of Assessment and Diagnosis
- 1.8. Errors in Diagnosis in the Childhood and Adolescence Stage
 - 1.8.1. When Can Errors in Diagnosis Occur?
 - 1.8.2. Modulating Factors
 - 1.8.3. Most Common Errors
- 1.9. Framing of the Family System in Psychological Therapy
 - 1.9.1. Concept of Family System
 - 1.9.2. The Family System in Psychological Therapy
 - 1.9.3. Problems Related to Family Involvement in the Minor's Therapy
- 1.10. Family Assessment
 - 1.10.1. Family Therapy vs. Individual Therapy
 - 1.10.2. Key Aspects for Family Assessment
 - 1.10.3. Measuring Instruments in Family Assessment

“

This Postgraduate Certificate will allow you to learn about the main instruments used to carry out family assessment”

04

Methodology

This training program offers a different way of learning. Our methodology uses a cyclical learning approach: **Relearning**.

This teaching system is used, for example, in the most prestigious medical schools in the world, and major publications such as the **New England Journal of Medicine** have considered it to be one of the most effective.





“

Discover Relearning, a system that abandons conventional linear learning, to take you through cyclical teaching systems: a way of learning that has proven to be extremely effective, especially in subjects that require memorization"

At TECH Education School we use the Case Method

In a given situation, what should a professional do? Throughout the program students will be presented with multiple simulated cases based on real situations, where they will have to investigate, establish hypotheses and, finally, resolve the situation. There is an abundance of scientific evidence on the effectiveness of the method.

With TECH, educators can experience a learning methodology that is shaking the foundations of traditional universities around the world.



It is a technique that develops critical skills and prepares educators to make decisions, defend their arguments, and contrast opinions.

“

Did you know that this method was developed in 1912, at Harvard, for law students? The case method consisted of presenting students with real-life, complex situations for them to make decisions and justify their decisions on how to solve them. In 1924, Harvard adopted it as a standard teaching method”

The effectiveness of the method is justified by four fundamental achievements:

1. Educators who follow this method not only grasp concepts, but also develop their mental capacity, by evaluating real situations and applying their knowledge.
2. The learning process is solidly focused on practical skills that allow educators to better integrate the knowledge into daily practice.
3. Ideas and concepts are understood more efficiently, given that the example situations are based on real-life teaching.
4. Students like to feel that the effort they put into their studies is worthwhile. This then translates into a greater interest in learning and more time dedicated to working on the course.



Relearning Methodology

At TECH we enhance the case method with the best 100% online teaching methodology available: Relearning.

Our University is the first in the world to combine case studies with a 100% online learning system based on repetition, combining a minimum of 8 different elements in each lesson, which represent a real revolution with respect to simply studying and analyzing cases.



Educators will learn through real cases and by solving complex situations in simulated learning environments. These simulations are developed using state-of-the-art software to facilitate immersive learning.

At the forefront of world teaching, the Relearning method has managed to improve the overall satisfaction levels of professionals who complete their studies, with respect to the quality indicators of the best online university (Columbia University).

With this methodology we have trained more than 85,000 educators with unprecedented success in all specialties. All this in a highly demanding environment, where the students have a strong socio-economic profile and an average age of 43.5 years.

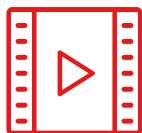
Relearning will allow you to learn with less effort and better performance, involving you more in your specialization, developing a critical mindset, defending arguments, and contrasting opinions: a direct equation to success.

In our program, learning is not a linear process, but rather a spiral (learn, unlearn, forget, and re-learn). Therefore, we combine each of these elements concentrically.

The overall score obtained by our learning system is 8.01, according to the highest international standards.



This program offers the best educational material, prepared with professionals in mind:



Study Material

All teaching material is produced by the specialist educators who teach the course, specifically for the course, so that the teaching content is really specific and precise.

These contents are then applied to the audiovisual format, to create the TECH online working method. All this, with the latest techniques that offer high quality pieces in each and every one of the materials that are made available to the student.



Educational Techniques and Procedures on Video

TECH introduces students to the latest techniques, with the latest educational advances, and to the forefront of Education. All this, first-hand, with the maximum rigor, explained and detailed for your assimilation and understanding. And best of all, you can watch them as many times as you want.



Interactive Summaries

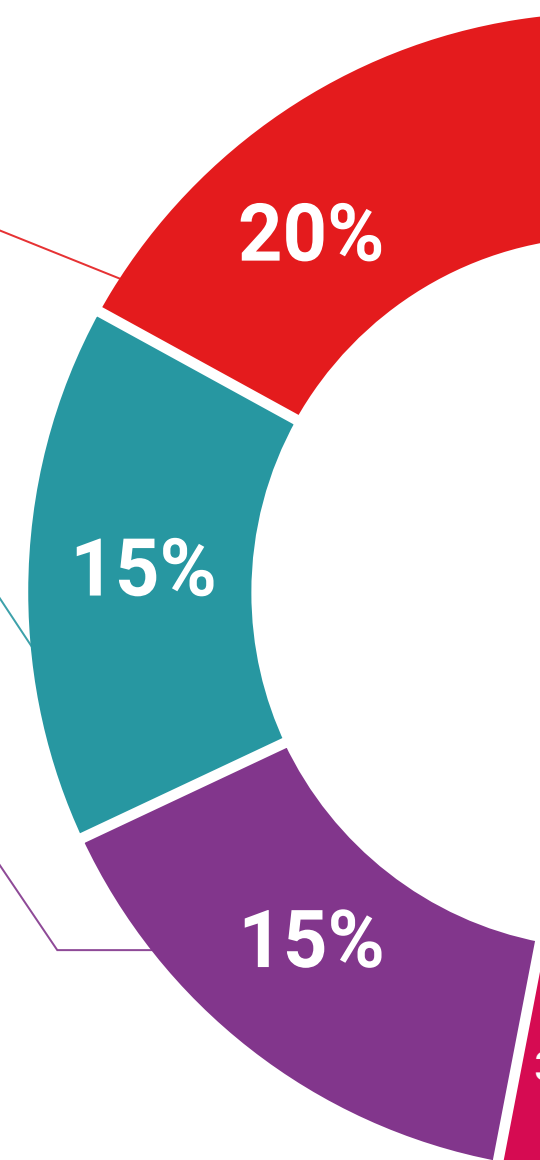
The TECH team presents the contents attractively and dynamically in multimedia lessons that include audio, videos, images, diagrams, and concept maps in order to reinforce knowledge.

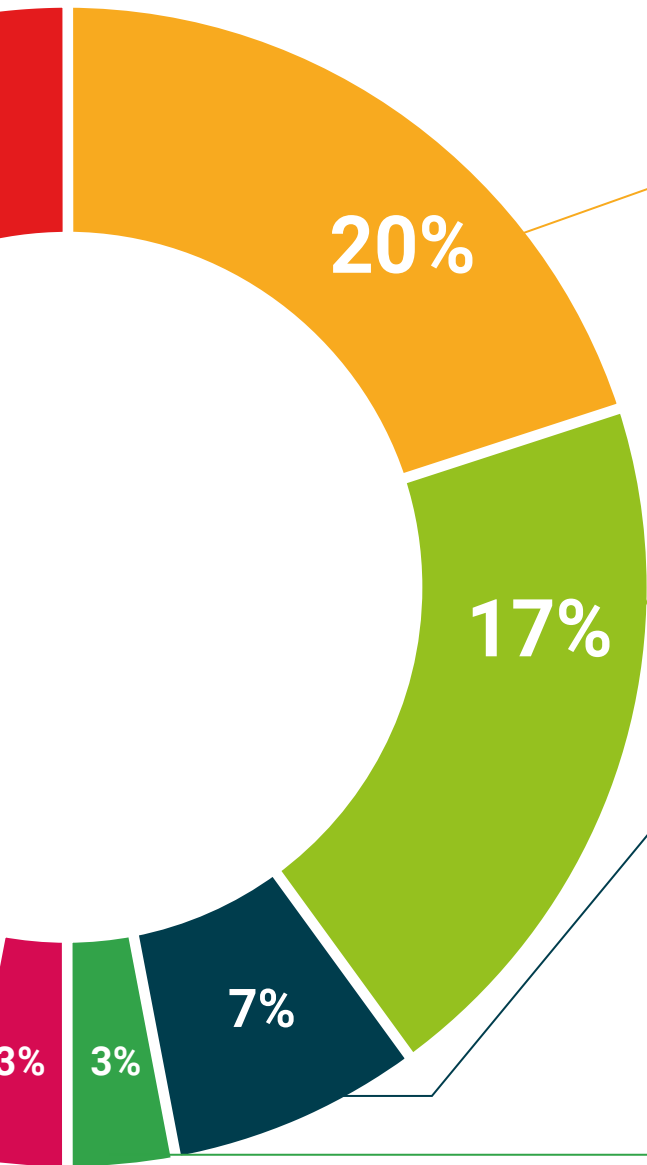
This exclusive multimedia content presentation training Exclusive system was awarded by Microsoft as a "European Success Story".



Additional Reading

Recent articles, consensus documents and international guidelines, among others. In TECH's virtual library, students will have access to everything they need to complete their course.





Expert-Led Case Studies and Case Analysis

Effective learning ought to be contextual. Therefore, TECH presents real cases in which the expert will guide students, focusing on and solving the different situations: a clear and direct way to achieve the highest degree of understanding.



Testing & Retesting

We periodically evaluate and re-evaluate students' knowledge throughout the program, through assessment and self-assessment activities and exercises: so that they can see how they are achieving your goals.



Classes

There is scientific evidence suggesting that observing third-party experts can be useful.

Learning from an Expert strengthens knowledge and memory, and generates confidence in future difficult decisions.



Quick Action Guides

TECH offers the most relevant contents of the course in the form of worksheets or quick action guides. A synthetic, practical, and effective way to help students progress in their learning.



05

Certificate

The Postgraduate Certificate in Therapeutic Relationship with the Minor, Assessment and Diagnostic Process in Child and Adolescent Psychopathology guarantees students, in addition to the most rigorous and up-to-date education, access to a Postgraduate Certificate issued by TECH Technological University.



“

Successfully complete this program and receive your university qualification without having to travel or fill out laborious paperwork”

This **Postgraduate Certificate in Therapeutic Relationship with the Minor, Assessment and Diagnostic Process in Child and Adolescent Psychopathology** contains the most complete and up-to-date program on the market.

After the student has passed the assessments, they will receive their corresponding **Postgraduate Certificate** issued by **TECH Technological University** via tracked delivery*.

The diploma issued by **TECH Technological University** will reflect the qualification obtained in the Postgraduate Certificate, and meets the requirements commonly demanded by labor exchanges, competitive examinations, and professional career evaluation committees.

Title: **Postgraduate Certificate in Therapeutic Relationship with the Minor, Assessment and Diagnostic Process in Child and Adolescent Psychopathology**

Official N° of hours: **150 h.**



*Apostille Convention. In the event that the student wishes to have their paper diploma issued with an apostille, TECH EDUCATION will make the necessary arrangements to obtain it, at an additional cost.



Postgraduate Certificate

Therapeutic Relationship with the Minor,
Assessment and Diagnostic Process in
Child and Adolescent Psychopathology

- » Modality: online
- » Duration: 6 weeks
- » Certificate: TECH Technological University
- » Schedule: at your own pace
- » Exams: online

Postgraduate Certificate

Therapeutic Relationship with the Minor, Assessment and Diagnostic Process in Child and Adolescent Psychopathology

