

# Postgraduate Certificate School Management of Bullying



## Postgraduate Certificate School Management of Bullying

- » Modality: online
- » Duration: 6 weeks
- » Certificate: TECH Technological University
- » Dedication: 16h/week
- » Schedule: at your own pace
- » Exams: online

Website: [www.techtitute.com/in/education/postgraduate-certificate/school-management-bullying](http://www.techtitute.com/in/education/postgraduate-certificate/school-management-bullying)

# Index

01

Introduction

---

*p. 4*

02

Objectives

---

*p. 8*

03

Structure and Content

---

*p. 12*

04

Methodology

---

*p. 16*

05

Certificate

---

*p. 24*

# 01

# Introduction

School harassment, or *bullying*, is a constant challenge in the educational environment, which negatively affects the welfare of students and their school environment. Faced with this situation, there is a need for professionals trained in the management of this problem. The program in School Management of Bullying, in 100% online mode, allows educators to deepen in key aspects such as behavioral observation, communication with the management team, information analysis and action of the Educational Inspection. In addition, diagnostics, application of questionnaires, intervention programs and emotional education are addressed, providing the necessary tools to prevent and address *bullying* effectively and systematically.





“

*Discover how to deal effectively with bullying through a multidisciplinary and updated approach in this Postgraduate Certificate"*

School bullying, also known as bullying, is a persistent and challenging problem in the educational environment. In recent years, it has become increasingly evident the need to address this phenomenon with a broader and multidisciplinary perspective, in order to ensure a safe and conducive school environment for the integral development of students. In this context, the demand for educational professionals trained and specialized in School Management of Bullying arises.

The Postgraduate Certificate in School Management of Bullying is an excellent opportunity for those educators interested in deepening and specializing in this subject. This program has been designed to address the current challenges faced by educational institutions in relation to bullying, so the syllabus covers key aspects such as the observation of behaviors in aggressors, victims and witnesses, communication with management and the management team, the collection and analysis of information, and the performance of the Educational Inspection.

This university program is justified in the current context due to the growing need for trained and committed professionals in the fight against bullying. School Management of Bullying is a task that involves the entire educational community, from management and teaching staff to families and students themselves. Therefore, this program provides educators with the necessary tools and skills to lead and coordinate actions aimed at preventing and addressing bullying effectively and systematically.

In addition, it addresses the diagnosis both in situations with presence and absence of bullying, as well as the application of specific evaluation questionnaires and intervention programs, such as Kiva, Zero, Mybullying and AVE. It also focuses on emotional education and psychological treatment in cases of bullying, and analyzes the short- and long-term consequences of bullying.

One of the most outstanding features of the Postgraduate Certificate in School Management of Bullying is its 100% online mode. This offers multiple advantages for educational professionals who wish to take it, such as the flexibility to adapt the study to their schedules and work responsibilities, as well as the possibility of accessing updated and quality didactic materials and resources from anywhere.

This **Postgraduate Certificate in School Management of Bullying** contains the most complete and up-to-date educational program on the market. The most important features include:

- ♦ The development of case studies presented by experts in Psychology, Personality Psychology and Psychopathology
- ♦ Graphic, schematic, and practical contents with which they are created, provide scientific and practical information on the disciplines that are essential for professional practice
- ♦ Practical exercises where self-assessment can be used to improve learning
- ♦ Its special emphasis on innovative methodologies
- ♦ Theoretical lessons, questions to the expert, debate forums on controversial topics, and individual reflection assignments
- ♦ Content that is accessible from any fixed or portable device with an Internet connection



*Expand your skills as an educator and become an agent of change in the prevention and management of bullying, with a specialized university program"*

“

*Don't wait any longer! Take advantage of the 100% online mode of this program and strengthen your professional skills from the comfort of your home and on your own schedule"*

The program's teaching staff includes professionals from the sector who contribute their work experience to this educational program, as well as renowned specialists from leading societies and prestigious universities.

Its multimedia content , developed with the latest educational technology, will provide the professionals with situated and contextual learning, i.e., a simulated environment that will provide an immersive education programmed to learn in real situations.

The design of this program focuses on Problem-Based Learning, by means of which the professionals must try to solve the different professional practice situations that are presented throughout the academic course. For this purpose, the students will be assisted by an innovative interactive video system created by renowned experts.

*Acquire knowledge in emotional education and psychological treatment in cases of bullying, thus promoting the welfare of your students and the educational community.*

*Learn to identify and apply intervention and prevention strategies, such as Kiva, Zero, Mybullying and AVE, to generate a safe and positive school environment.*



# 02

# Objectives

Throughout the program, the students must meet various objectives that will allow them to effectively face the challenges involved in the School Management of *Bullying*. This includes developing skills to identify and analyze behaviors in aggressors, victims and witnesses, improve communication with the management team, master information collection and analysis techniques, as well as apply specific evaluation questionnaires and intervention programs.







“

*Improve your communication skills with management and the management team, to coordinate actions and ensure an adequate response to cases of bullying in your school”*



## General Objectives

---

- ♦ Deepen in the prevention and intervention in school bullying
- ♦ Delve into the different areas in which bullying has an impact
- ♦ Offer a system of in-depth study for a comprehensive approach to school bullying
- ♦ Inquire into the educational, psychological, social and legal aspects of school bullying
- ♦ Acquire in-depth knowledge of the relationship between bullying and its psychological consequences
- ♦ Describe school conflict management, assertive communication and problem solving tools
- ♦ Explain the tools to know how to prevent school bullying
- ♦ Explain the tools to know how to intervene in school bullying
- ♦ Enable to work collaboratively with all the actors involved in bullying





## Specific Objectives

---

- Delve into the teacher's role in prevention and intervention
- Describe the functions of the school in terms of prevention and intervention
- Point out the role of the guidance counselor in terms of prevention and intervention
- Explain different intervention programs that have been successfully implemented
- Discuss the efficacy of emotional education
- Describe different tools for bullying detection



*Master the techniques for collecting and analyzing information, which will allow you to implement emergency measures and keep families informed in cases of bullying"*

03

# Structure and Content

The structure and contents of the program have been meticulously designed to comprehensively address the School Management of Bullying. All this is presented through updated and quality didactic material, which incorporates readings, case studies, videos and interactive activities, taught by experts in the field of bullying, allowing students to apply what they have learned in real situations and face with greater confidence the challenges in the prevention and management of *bullying*.



“

*Strengthen your competencies to face with greater confidence the challenges presented by the School Management of Bullying”*

## Module 1. The teacher, the school and the counseling service

- 1.1. Observation of behaviors that can constitute bullying
  - 1.1.1. Observation of behaviors in the aggressor
  - 1.1.2. Observation of behaviors in the victim
  - 1.1.3. Observation of behaviors in witnesses
- 1.2. Communication to the director and management team
  - 1.2.1. Coexistence plan
  - 1.2.2. Action Protocol
  - 1.2.3. Activation of the action protocol
- 1.3. Collection and analysis of information
  - 1.3.1. Information Gathering Process
  - 1.3.2. Adoption of emergency measures
  - 1.3.3. First communication to families
- 1.4. Educational Inspection
  - 1.4.1. What is Educational Inspection
  - 1.4.2. Report referred to Educational Inspection
  - 1.4.3. Action taken by the Educational Inspection
- 1.5. Diagnosis with absence of bullying
  - 1.5.1. Educational guidelines on bullying prevention
  - 1.5.2. Educational approach with the classroom
  - 1.5.3. Tools for dealing with at-risk situations
- 1.6. Bullying diagnosis
  - 1.6.1. Procedure for Action
  - 1.6.2. Intervention with the aggressor
  - 1.6.3. Intervention with the victim
  - 1.6.4. Intervention with witnesses
- 1.7. Evaluation questionnaires
  - 1.7.1. Bullying questionnaires
  - 1.7.2. Cyberbullying questionnaires
  - 1.7.3. Questionnaires to assess peer relationships
  - 1.7.4. Questionnaires to assess mood



- 1.8. Bullying intervention programs
  - 1.8.1. Kiva program
  - 1.8.2. Zero Program
  - 1.8.3. Mybullying Program
  - 1.8.4. AVE Program
- 1.9. Emotional Education
  - 1.9.1. Emotion of sadness
  - 1.9.2. Emotion of joy
  - 1.9.3. Anger emotion
  - 1.9.4. Emotion of fear
  - 1.9.5. Empathy
  - 1.9.6. Psychological treatment in bullying
- 1.10. Consequences of bullying
  - 1.10.1 Psychological effects of bullying
  - 1.10.2. Long-term effects of bullying
  - 1.10.3. Comorbidity in bullying



*Access a complete syllabus that covers everything from behavioral observation and communication with the management team, to intervention programs and emotional education"*

04

# Methodology

This training program offers a different way of learning. Our methodology uses a cyclical learning approach: **Relearning**.

This teaching system is used, for example, in the most prestigious medical schools in the world, and major publications such as the **New England Journal of Medicine** have considered it to be one of the most effective.







“

*Discover Relearning, a system that abandons conventional linear learning, to take you through cyclical teaching systems: a way of learning that has proven to be extremely effective, especially in subjects that require memorization"*

## At TECH Education School we use the Case Method

In a given situation, what should a professional do? Throughout the program students will be presented with multiple simulated cases based on real situations, where they will have to investigate, establish hypotheses and, finally, resolve the situation. There is an abundance of scientific evidence on the effectiveness of the method.

*With TECH, educators can experience a learning methodology that is shaking the foundations of traditional universities around the world.*



*It is a technique that develops critical skills and prepares educators to make decisions, defend their arguments, and contrast opinions.*

“

*Did you know that this method was developed in 1912, at Harvard, for law students? The case method consisted of presenting students with real-life, complex situations for them to make decisions and justify their decisions on how to solve them. In 1924, Harvard adopted it as a standard teaching method”*

The effectiveness of the method is justified by four fundamental achievements:

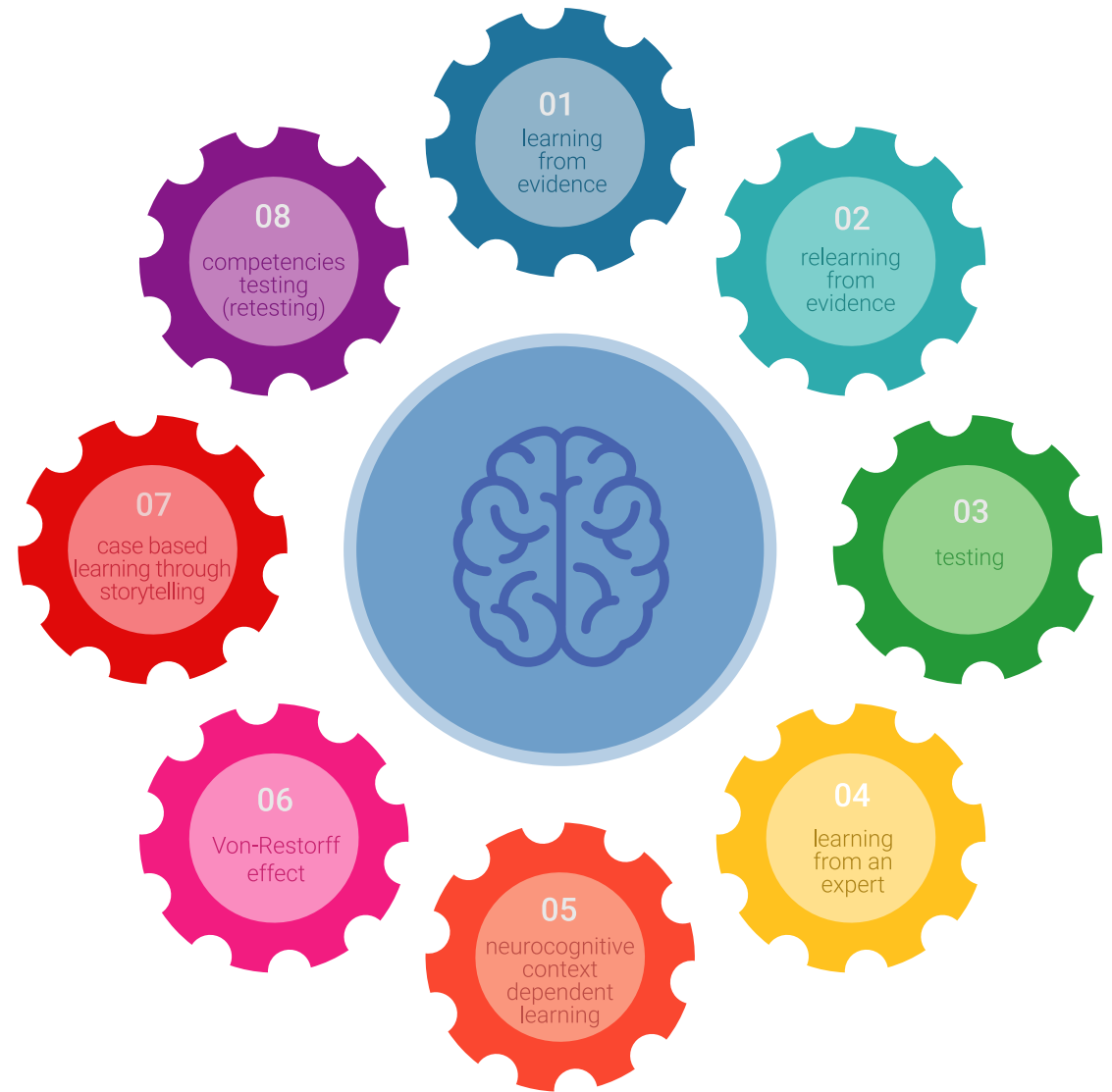
1. Educators who follow this method not only grasp concepts, but also develop their mental capacity, by evaluating real situations and applying their knowledge.
2. The learning process is solidly focused on practical skills that allow educators to better integrate the knowledge into daily practice.
3. Ideas and concepts are understood more efficiently, given that the example situations are based on real-life teaching.
4. Students like to feel that the effort they put into their studies is worthwhile. This then translates into a greater interest in learning and more time dedicated to working on the course.



## Relearning Methodology

At TECH we enhance the case method with the best 100% online teaching methodology available: Relearning.

Our University is the first in the world to combine case studies with a 100% online learning system based on repetition, combining a minimum of 8 different elements in each lesson, which represent a real revolution with respect to simply studying and analyzing cases.



*Educators will learn through real cases and by solving complex situations in simulated learning environments. These simulations are developed using state-of-the-art software to facilitate immersive learning.*

At the forefront of world teaching, the Relearning method has managed to improve the overall satisfaction levels of professionals who complete their studies, with respect to the quality indicators of the best online university (Columbia University).

With this methodology we have trained more than 85,000 educators with unprecedented success in all specialties. All this in a highly demanding environment, where the students have a strong socio-economic profile and an average age of 43.5 years.

*Relearning will allow you to learn with less effort and better performance, involving you more in your specialization, developing a critical mindset, defending arguments, and contrasting opinions: a direct equation to success.*

In our program, learning is not a linear process, but rather a spiral (learn, unlearn, forget, and re-learn). Therefore, we combine each of these elements concentrically.

The overall score obtained by our learning system is 8.01, according to the highest international standards.



This program offers the best educational material, prepared with professionals in mind:



#### Study Material

All teaching material is produced by the specialist educators who teach the course, specifically for the course, so that the teaching content is really specific and precise.

These contents are then applied to the audiovisual format, to create the TECH online working method. All this, with the latest techniques that offer high quality pieces in each and every one of the materials that are made available to the student.



#### Educational Techniques and Procedures on Video

TECH introduces students to the latest techniques, with the latest educational advances, and to the forefront of Education. All this, first-hand, with the maximum rigor, explained and detailed for your assimilation and understanding. And best of all, you can watch them as many times as you want.



#### Interactive Summaries

The TECH team presents the contents attractively and dynamically in multimedia lessons that include audio, videos, images, diagrams, and concept maps in order to reinforce knowledge.

This exclusive multimedia content presentation training Exclusive system was awarded by Microsoft as a "European Success Story".



#### Additional Reading

Recent articles, consensus documents and international guidelines, among others. In TECH's virtual library, students will have access to everything they need to complete their course.





**Expert-Led Case Studies and Case Analysis**

Effective learning ought to be contextual. Therefore, TECH presents real cases in which the expert will guide students, focusing on and solving the different situations: a clear and direct way to achieve the highest degree of understanding.



**Testing & Retesting**

We periodically evaluate and re-evaluate students' knowledge throughout the program, through assessment and self-assessment activities and exercises: so that they can see how they are achieving your goals.



**Classes**

There is scientific evidence suggesting that observing third-party experts can be useful.

Learning from an Expert strengthens knowledge and memory, and generates confidence in future difficult decisions.



**Quick Action Guides**

TECH offers the most relevant contents of the course in the form of worksheets or quick action guides. A synthetic, practical, and effective way to help students progress in their learning.



05

# Certificate

The Postgraduate Certificate in School Management of Bullying guarantees students, in addition to the most rigorous and up-to-date education, access to a Postgraduate Certificate issued by TECH Technological University.





“

*Successfully complete this program and receive your university qualification without having to travel or fill out laborious paperwork”*

This **Postgraduate Certificate in School Management of Bullying** contains the most complete and up-to-date program on the market.

After the student has passed the assessments, they will receive their corresponding **Postgraduate Certificate** issued by **TECH Technological University** via tracked delivery\*.

The certificate issued by **TECH Technological University** will reflect the qualification obtained in the Postgraduate Certificate, and meets the requirements commonly demanded by labor exchanges, competitive examinations, and professional career evaluation committees.

Title: **Postgraduate Certificate in School Management of Bullying**

Official N° of Hours: **150 h.**



\*Apostille Convention. In the event that the student wishes to have their paper certificate issued with an apostille, TECH EDUCATION will make the necessary arrangements to obtain it, at an additional cost.

future  
health confidence people  
education information tutors  
guarantee accreditation teaching  
institutions technology learning  
community commitment  
personalized service innovation  
knowledge present  
development language  
virtual classroom



## Postgraduate Certificate School Management of Bullying

- » Modality: online
- » Duration: 6 weeks
- » Certificate: TECH Technological University
- » Dedication: 16h/week
- » Schedule: at your own pace
- » Exams: online

# Postgraduate Certificate School Management of Bullying

