

Postgraduate Certificate Emotional Intelligence and Career Guidance





Postgraduate Certificate Emotional Intelligence and Career Guidance

- » Modality: online
- » Duration: 6 weeks
- » Certificate: TECH Technological University
- » Dedication: 16h/week
- » Schedule: at your own pace
- » Exams: online

Website: www.techtitute.com/pk/education/postgraduate-certificate/emotional-intelligence-career-guidance

Index

01

Introduction

p. 4

02

Objectives

p. 8

03

Course Management

p. 12

04

Structure and Content

p. 16

05

Methodology

p. 22

06

Certificate

p. 30

01

Introduction

The current employment situation and the profound changes in the labor market of the last 10 years require a new approach by teachers to the professional and vocational guidance of their students. It is necessary to bring the reality of work closer to the classroom.





“

This Postgraduate Certificate in Emotional Intelligence and Career Guidance will generate a sense of confidence in the performance of your profession, which will help you to grow personally and professionally”

Emotional intelligence plays an important role in decision-making, for this case it is of vital importance since many of the choices allow students to be satisfied about their future. The fact of deciding will allow the students to gain an emotional intelligence that will in turn help them to make their way in the profession of their choice.

The resources that the professionals will find in this Postgraduate Certificate will allow them to obtain better results in the medium and long term in the development of the emotional management capacity and intelligence in this field of the members of the school center.

Both the activities proposed and the innovative approaches to guidance that you will encounter will enable the student to improve their professional skills and the results of their department in the center. Additionally, you will find information that will give you support for the different particular cases you may have with your students.

This qualification enables professionals in this field to increase their capacity for success, which results in better praxis and performance that will have a direct impact on educational treatment, on the improvement of the educational system and on the social benefit for the entire community.



Update your knowledge through the Postgraduate Certificate in Emotional Intelligence and Career Guidance”

This **Postgraduate Certificate in Emotional Intelligence and Career Guidance** contains the most complete and up-to-date educational program on the market. The most important features include:

- ♦ More than 75 practical cases presented by experts in Emotional Intelligence and Career Guidance
- ♦ The graphic, schematic, and practical contents with which they are created provide scientific and practical information on the disciplines that are essential for professional practice
- ♦ New developments on detection and intervention in Emotional Intelligence and Career Guidance
- ♦ It contains practical exercises where the self-assessment process can be carried out to improve learning
- ♦ Algorithm-based interactive learning system for decision-making in the situations that are presented to the student
- ♦ With special emphasis on evidence-based methodologies in Emotional Intelligence and Career Guidance
- ♦ All of this will be complemented by theoretical lessons, questions to the expert, debate forums on controversial topics, and individual reflection assignments
- ♦ Content that is accessible from any fixed or portable device with an Internet connection

“

This Postgraduate Certificate is the best investment you can make when selecting a refresher program, for two reasons: in addition to updating your knowledge in Emotional Intelligence and Career Guidance, you will obtain a qualification endorsed by TECH Technological University”

It includes, in its teaching staff, professionals belonging to the field of Emotional Intelligence and Career Guidance, who bring to this training the experience of their work, as well as recognized specialists belonging to reference societies and prestigious universities.

Thanks to its multimedia content developed with the latest educational technology, they will allow the professional a situated and contextual learning, that is to say, a simulated environment that will provide an immersive learning programmed to prepare in real situations.

The design of this program focuses on Problem-Based Learning, by means of which the professional must try to solve the different professional practice situations that are presented throughout the academic course. For this, the professional will be assisted by an innovative interactive video system created by recognized experts in the field of Emotional Intelligence and Career Guidance with extensive teaching experience.

Increase your decision-making confidence by updating your knowledge through this Postgraduate Certificate.

Take the opportunity to learn about the latest advances in Emotional Intelligence and Career Guidance and improve the attention of your students.



02

Objectives

The Postgraduate Certificate in Emotional Intelligence and Career Guidance is aimed at facilitating the performance of professionals dedicated to working with adolescents and/or guiding them in their professional future.



“

This Postgraduate Certificate is designed to help you update your knowledge in Emotional Intelligence and Career Guidance, with the use of the latest educational technology, to contribute with quality and security to the decision-making and follow-up of these students”



General Objectives

- Learn the theoretical basis of emotional intelligence
- Learn how to work on emotional intelligence at different educational stages
- Learn how to work on emotional intelligence in relation to vocational and professional orientation





Specific Objectives

- ♦ Support the student regardless of the vocation they choose
- ♦ Give the student the basis to face the challenges that will be put in their way after having chosen their career or vocation

“

Make the most of the opportunity and take the step to get up to date on the latest developments in the management of Emotional Intelligence and Career Guidance”



03

Course Management

The program includes in its teaching staff reference specialists in Emotional Intelligence and Career Guidance, who bring to this training the experience of their work. Additionally, other recognized specialists participate in its design and preparation, which means that the program is developed in an interdisciplinary manner.



“

Learn from reference professionals, the latest advances in procedures in the field of Emotional Intelligence and Career Guidance”

Management



Ms. Jiménez Romero, Yolanda

- ♦ Psychopedagogue specialized in Neurolinguistics
- ♦ Educational psychologist
- ♦ Degree in Primary Education with English
- ♦ Educational psychologist
- ♦ Master's Degree in Neuropsychology of High Intellectual Abilities
- ♦ Master's Degree in Emotional Intelligence
- ♦ Specialized Teacher in High Intellectual Ability
- ♦ Co-director, Author and Teacher in Different University Educational Projects

Professors

Ms. García Camarena, Carmen

- ♦ Manager of Step by Step, a vocational guidance company for all professional stages
- ♦ Psychologist and Master in Business Administration, CAP at the Alfonso X el Sabio University
- ♦ Specialization in FOL and Master in HR and group techniques
- ♦ Creator of a Methodology Adapted to High School Stages

Mr. Maroto, José María

- ♦ Computer Engineer
- ♦ Consultant specialized in Coaching, Change Management, Motivation, Emotional Intelligence and Leadership
- ♦ Professor specialized in Innovation and Big Data processes
- ♦ Expert in learning, lecturer and writer of articles and publications related to his areas of expertise



04

Structure and Content

The structure of the contents has been designed by a team of professionals from leading educational centers and universities, aware of the relevance of the program to intervene in the training and support of students with high capacity, and committed to quality teaching through new educational technologies.



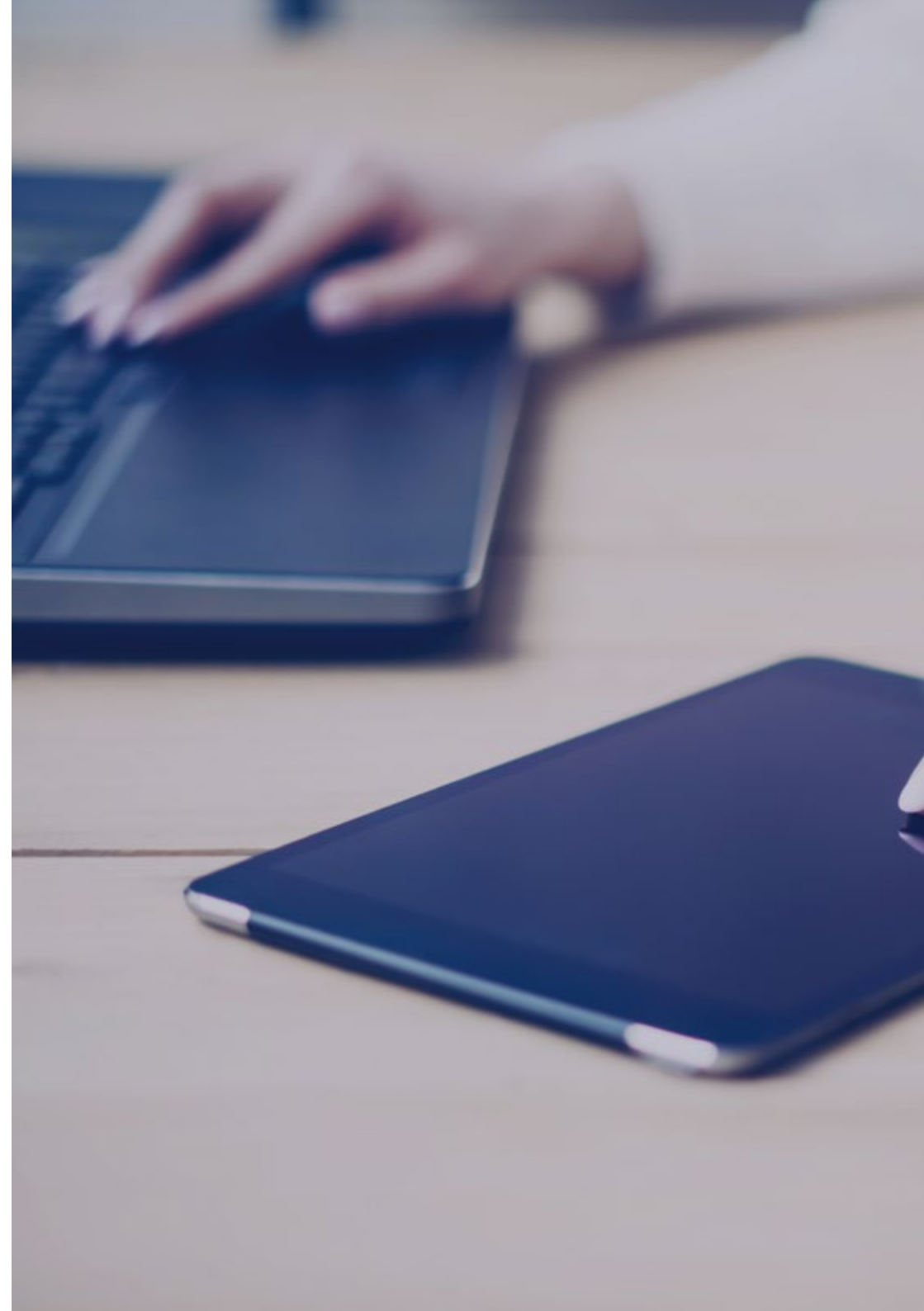



“

This Postgraduate Certificate in Emotional Intelligence and Career Guidance contains the most complete and up-to-date program on the market”

Module 1. Development of Emotional Intelligence in Professional Guidance

- 1.1. Theoretical Basis: What is Emotional Intelligence Needed For?
 - 1.1.1. Definition of the Concept of Emotional Intelligence
 - 1.1.2. Elements of Emotional Intelligence
 - 1.1.3. Emotional Intelligence and Education
 - 1.1.4. Emotional Education and Basic Competencies
 - 1.1.5. The Delors Report (UNESCO 1996)
 - 1.1.6. Family and Emotional Education
 - 1.1.7. Emotional Competencies
 - 1.1.8. Ideal Environments
 - 1.1.9. Principles, Values and Virtues
 - 1.1.10. Roadmap in Emotional Intelligence
- 1.2. Self-Knowledge and Management of Emotions
 - 1.2.1. Human Dimension, Self-Knowledge
 - 1.2.2. What are Feelings?
 - 1.2.3. Expression in the Body
 - 1.2.4. Rational Expression
 - 1.2.5. What are Emotions
 - 1.2.6. Basic Emotions
 - 1.2.7. Expression of Emotion
 - 1.2.8. Self-Confidence
 - 1.2.9. Self-Concept Application Models
 - 1.2.10. Self-Care
- 1.3. Emotional Intelligence in Adolescence
 - 1.3.1. Stages of Development, the Child Grows Emotionally. Life Cycle
 - 1.3.2. Virginia Satir, Family Model
 - 1.3.3. From the Family to the Individual
 - 1.3.4. Emotional Characteristics of the Adolescent
 - 1.3.5. Emotional Perception
 - 1.3.6. Adolescent Emotional Domains
 - 1.3.7. Skills Development
 - 1.3.8. Social Stress
 - 1.3.9. Visualization of Goals
 - 1.3.10. Application Models



- 
- 1.4. Empathy, Leadership and Emotional Regulation
 - 1.4.1. Our Brain, Cerebral Hemispheres
 - 1.4.2. Rational vs Emotional Intelligence
 - 1.4.3. The Self and the Other
 - 1.4.4. Assertiveness as a Way of Life, Emotional Regulation
 - 1.4.5. Basic Beliefs, our Map of How We View Life
 - 1.4.6. Knowing My Personal Goals
 - 1.4.7. Recognizing Personal Skills
 - 1.4.8. True Success
 - 1.4.9. Competencies to be Developed
 - 1.4.10. Real Knowledge of Limiting Beliefs
 - 1.4.11. Application Models
 - 1.5. Development of Social Skills
 - 1.5.1. Educating for Social Relationships
 - 1.5.2. Direct Experience
 - 1.5.3. Imitation
 - 1.5.4. Reinforcements
 - 1.5.5. Raise the Level of Social Competence
 - 1.5.6. Conflict Resolution
 - 1.5.7. Stress Management
 - 1.5.8. Disruptive Behaviors
 - 1.5.9. Communication
 - 1.5.10. Application Models
 - 1.6. Implications for Employment
 - 1.6.1. Individuation Period
 - 1.6.2. Intellectual Development
 - 1.6.3. Physical development
 - 1.6.4. Development of a Way of Life
 - 1.6.5. Personality Development
 - 1.6.6. Vocational Orientation
 - 1.6.7. Potential and Challenge
 - 1.6.8. Education and Training
 - 1.6.9. Application Models

1.7 Enthusiasm and Motivation

- 1.7.1. Initial Enthusiasm and Sustained Motivation
- 1.7.2. Definition of Neurological Levels
- 1.7.3. Generate Self-Esteem
- 1.7.4. On the Way to Your Goal
- 1.7.5. Problem Solving
- 1.7.6. Self-Motivation: Strengths
- 1.7.7. Motivation in the Classroom: Cultivating Curiosity
- 1.7.8. Professional Interests
- 1.7.9. Tolerance to Failure
- 1.7.10. Application Models

1.8. Emotional Management

- 1.8.1. Perception, the Map of Seeing Life, Analysis of the Emotional Situation
- 1.8.2. Observation of the Ambioema
- 1.8.3. Detection of Limiting Beliefs
- 1.8.4. Emotions for Life
- 1.8.5. Stress, Concept, Symptoms and Types
- 1.8.6. Managing Stress
- 1.8.7. Sustaining Emotion
- 1.8.8. Resilience
- 1.8.9. Expression Channels
- 1.8.10. Application Models

1.9. The Development of Attitudes and Competencies for the Work Environment

- 1.9.1. What are Job Competencies?
- 1.9.2. Competency Standards
- 1.9.3. Occupational Profiles
- 1.9.4. Employability Skills
- 1.9.5. Attitudes towards Employability: Social, and Work Attitudes
- 1.9.6. Affective, Cognitive and Behavioral Components of Attitudes
- 1.9.7. Attitude Change: Congruent and Incongruent
- 1.9.8. Most Valued Social Skills with Respect to Employability
- 1.9.9. Personal Map of Attitudes and Competencies
- 1.9.10. Application Models





- 1.10. Resources in Primary Education: An Evolutionary Approach
 - 1.10.1. Identification of Emotions
 - 1.10.2. The Self and the Other
 - 1.10.3. Emotional Environment
 - 1.10.4. Description of the Child's Environment: Expression Channels
 - 1.10.5. Self-concept
 - 1.10.6. Development of Self-Esteem
 - 1.10.7. Enhancing the Expression of Emotions, Assertiveness
 - 1.10.8. Intervention Strategies in Emotional Education
 - 1.10.9. Development of Emotional Competencies
 - 1.10.10. Application Models

“

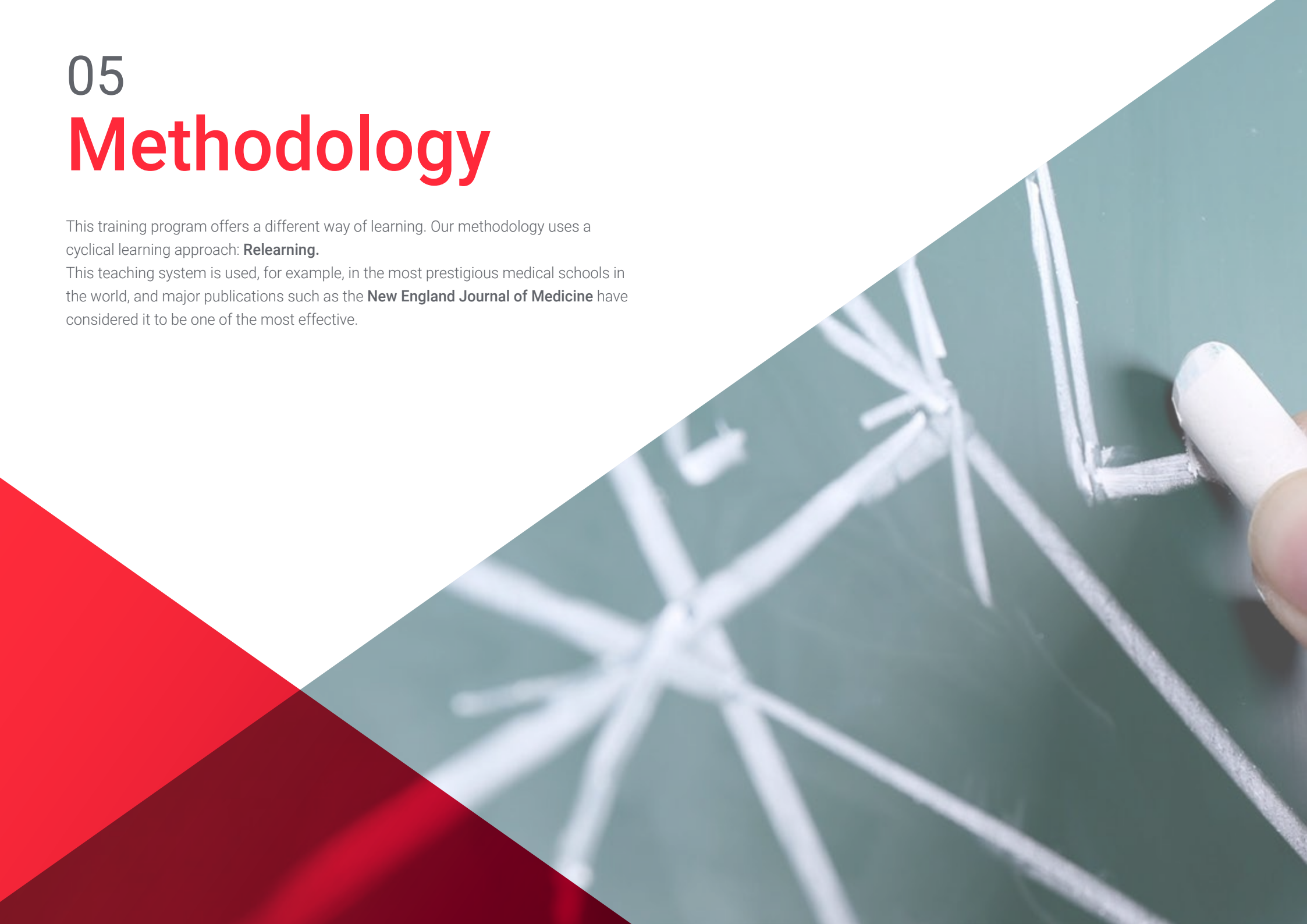
A unique, key and decisive educational experience to boost your professional development”

05

Methodology

This training program offers a different way of learning. Our methodology uses a cyclical learning approach: **Relearning**.

This teaching system is used, for example, in the most prestigious medical schools in the world, and major publications such as the **New England Journal of Medicine** have considered it to be one of the most effective.





“

Discover Relearning, a system that abandons conventional linear learning, to take you through cyclical teaching systems: a way of learning that has proven to be extremely effective, especially in subjects that require memorization”

At TECH Education School we use the Case Method

In a given situation, what should a professional do? Throughout the program students will be presented with multiple simulated cases based on real situations, where they will have to investigate, establish hypotheses and, finally, resolve the situation. There is an abundance of scientific evidence on the effectiveness of the method.

With TECH, educators can experience a learning methodology that is shaking the foundations of traditional universities around the world.



It is a technique that develops critical skills and prepares educators to make decisions, defend their arguments, and contrast opinions.

“

Did you know that this method was developed in 1912, at Harvard, for law students? The case method consisted of presenting students with real-life, complex situations for them to make decisions and justify their decisions on how to solve them. In 1924, Harvard adopted it as a standard teaching method”

The effectiveness of the method is justified by four fundamental achievements:

1. Educators who follow this method not only grasp concepts, but also develop their mental capacity, by evaluating real situations and applying their knowledge.
2. The learning process is solidly focused on practical skills that allow educators to better integrate the knowledge into daily practice.
3. Ideas and concepts are understood more efficiently, given that the example situations are based on real-life teaching.
4. Students like to feel that the effort they put into their studies is worthwhile. This then translates into a greater interest in learning and more time dedicated to working on the course.



Relearning Methodology

At TECH we enhance the case method with the best 100% online teaching methodology available: Relearning.

Our University is the first in the world to combine case studies with a 100% online learning system based on repetition, combining a minimum of 8 different elements in each lesson, which represent a real revolution with respect to simply studying and analyzing cases.



Educators will learn through real cases and by solving complex situations in simulated learning environments. These simulations are developed using state-of-the-art software to facilitate immersive learning.

At the forefront of world teaching, the Relearning method has managed to improve the overall satisfaction levels of professionals who complete their studies, with respect to the quality indicators of the best online university (Columbia University).

With this methodology we have trained more than 85,000 educators with unprecedented success in all specialties. All this in a highly demanding environment, where the students have a strong socio-economic profile and an average age of 43.5 years.

Relearning will allow you to learn with less effort and better performance, involving you more in your specialization, developing a critical mindset, defending arguments, and contrasting opinions: a direct equation to success.

In our program, learning is not a linear process, but rather a spiral (learn, unlearn, forget, and re-learn). Therefore, we combine each of these elements concentrically.

The overall score obtained by our learning system is 8.01, according to the highest international standards.



This program offers the best educational material, prepared with professionals in mind:



Study Material

All teaching material is produced by the specialist educators who teach the course, specifically for the course, so that the teaching content is really specific and precise.

These contents are then applied to the audiovisual format, to create the TECH online working method. All this, with the latest techniques that offer high quality pieces in each and every one of the materials that are made available to the student.



Educational Techniques and Procedures on Video

TECH introduces students to the latest techniques, with the latest educational advances, and to the forefront of Education. All this, first-hand, with the maximum rigor, explained and detailed for your assimilation and understanding. And best of all, you can watch them as many times as you want.



Interactive Summaries

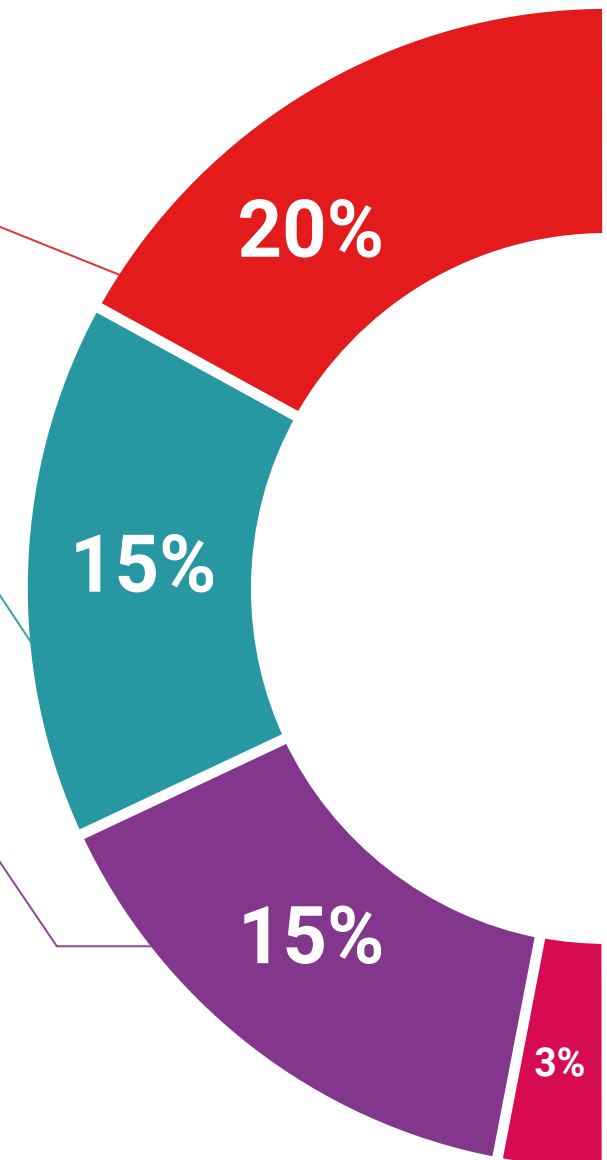
The TECH team presents the contents attractively and dynamically in multimedia lessons that include audio, videos, images, diagrams, and concept maps in order to reinforce knowledge.

This exclusive multimedia content presentation training Exclusive system was awarded by Microsoft as a "European Success Story".



Additional Reading

Recent articles, consensus documents and international guidelines, among others. In TECH's virtual library, students will have access to everything they need to complete their course.





Expert-Led Case Studies and Case Analysis

Effective learning ought to be contextual. Therefore, TECH presents real cases in which the expert will guide students, focusing on and solving the different situations: a clear and direct way to achieve the highest degree of understanding.



Testing & Retesting

We periodically evaluate and re-evaluate students' knowledge throughout the program, through assessment and self-assessment activities and exercises: so that they can see how they are achieving your goals.



Classes

There is scientific evidence suggesting that observing third-party experts can be useful.

Learning from an Expert strengthens knowledge and memory, and generates confidence in future difficult decisions.



Quick Action Guides

TECH offers the most relevant contents of the course in the form of worksheets or quick action guides. A synthetic, practical, and effective way to help students progress in their learning.



06

Certificate

The Postgraduate Certificate in Emotional Intelligence and Career Guidance guarantees students, in addition to the most rigorous and up-to-date education, access to a Postgraduate Certificate issued by TECH Technological University.



“

Successfully complete this program and receive your university qualification without having to travel or fill out laborious paperwork”

This **Postgraduate Certificate in Emotional Intelligence and Career Guidance** contains the most complete and up-to-date program on the market.

After the student has passed the assessments, they will receive their corresponding **Postgraduate Certificate** issued by **TECH Technological University** via tracked delivery*.

The certificate issued by **TECH Technological University** will reflect the qualification obtained in the Postgraduate Certificate, and meets the requirements commonly demanded by labor exchanges, competitive examinations, and professional career evaluation committees.

Title: **Postgraduate Certificate in Emotional Intelligence and Career Guidance**

Official N° of Hours: **150 h.**



*Apostille Convention. In the event that the student wishes to have their paper certificate issued with an apostille, TECH EDUCATION will make the necessary arrangements to obtain it, at an additional cost.

future
health confidence people
education information tutors
guarantee accreditation teaching
institutions technology learning
community commitment
personalized service innovation
knowledge present
development language
virtual classroom

tech technological
university

Postgraduate Certificate Emotional Intelligence and Career Guidance

- › Modality: online
- › Duration: 6 weeks
- › Certificate: TECH Technological University
- › Dedication: 16h/week
- › Schedule: at your own pace
- › Exams: online

Postgraduate Certificate Emotional Intelligence and Career Guidance

