

Postgraduate Certificate

Creativity and Emotional Education in the Classroom



Postgraduate Certificate Creativity and Emotional Education in the Classroom

- » Modality: online
- » Duration: 6 weeks
- » Certificate: TECH Global University
- » Credits: 5 ECTS
- » Schedule: at your own pace
- » Exams: online

Website: www.techtute.com/us/education/postgraduate-certificate/creativity-emotional-education-classroom

Index

01

Introduction

p. 4

02

Objectives

p. 8

03

Course Management

p. 12

04

Structure and Content

p. 18

05

Methodology

p. 22

06

Certificate

p. 30

01

Introduction

The integration of creativity and emotional education in the classroom for students with High Capacities is of vital importance. These educational approaches allow them to develop their intellectual, creative and affective potential, preparing them to face challenges in a comprehensive manner and achieve significant achievements in their personal growth. This is why the role of the teachers is important, since they can ensure that these students receive learning that is adapted to their needs. This will allow them to improve their imagination and achieve holistic progress. For this reason, TECH has created a program in 100% online mode, which gives the educator the flexibility to reconcile their daily obligations with their studies, since they will not be subject to rigid schedules.





“

Thanks to TECH, delve into emotional intelligence and the education of emotions from the prestigious model of Mayer and Salovey"

Integrate creativity and emotional education in the classroom for students with high abilities has multiple benefits. First of all, it fosters integral development, making the most of their intellectual and affective potential. It also provides them with a space to freely express their ideas, emotions and thoughts, promoting their self-esteem, and self-confidence. In the same way, it fosters critical thinking and problem solving, essential skills to face the challenges of everyday life. In this sense, the integration of these two areas stimulates adaptability, mental flexibility and the ability to work in teams, preparing these students for a future in which the ability to innovate and collaborate is increasingly required.

Consequently, it is essential for the educator to keep abreast of the latest pedagogical approaches that address inspiration and caring education in students with outstanding intellectual abilities. In this way, you will be prepared to employ originality assessments and tests, use motivational materials, and recognize the factors that generate demotivation in the classroom. In this sense, the teacher will be able to provide them with the appropriate tools and resources to encourage and maximize their creative faculty.

In order to achieve this objective, TECH has developed a Postgraduate Certificate in Creativity and Emotional Education in the Classroom. With the purpose of providing the teacher with the most up-to-date knowledge in the educational field to foster originality and the development of sensitive competencies in individuals with outstanding intellectual abilities. This program incorporates the Relearning methodology and is presented in a 100% online format. Furthermore, it offers the participant the flexibility to access at any time and place, since it only requires an electronic device with an Internet connection.

This **Postgraduate Certificate in Creativity and Emotional Education in the Classroom** contains the most complete and up-to-date program on the market. The most important features include:

- ♦ Case studies presented by experts in High-Capacity Individuals and Inclusive Education
- ♦ The graphic, schematic, and practical contents with which they are created, provide scientific and practical information on the disciplines that are essential for professional practice
- ♦ Practical exercises where self-assessment can be used to improve learning
- ♦ Its special emphasis on innovative methodologies
- ♦ Theoretical lessons, questions to the expert, debate forums on controversial topics, and individual reflection assignments
- ♦ Content that is accessible from any fixed or portable device with an Internet connection



Expand your skills and explore further into other models of emotional intelligence and transformation, with this 100% online program"

“ *TECH offers you the best teaching tools so that, through 6 weeks of intensive learning, you can investigate hyperemotivity and its influence on the learning of students with high capacities*”

Delves into how social-emotional competencies and creativity relate to a student's level of intelligence.

Throughout this program, you will understand the concept of emotional quotient and its importance in intellectual high capacities.

The program's teaching staff includes professionals from the field who contribute their work experience to this educational program, as well as renowned specialists from leading societies and prestigious universities.

The multimedia content, developed with the latest educational technology, will provide the professional with situated and contextual learning, i.e., a simulated environment that will provide immersive education programmed to learn in real situations.

This program is designed around Problem-Based Learning, whereby the professional must try to solve the different professional practice situations that arise during the educational year. For this purpose, the students will be assisted by an innovative interactive video system created by renowned and experienced experts.



02

Objectives

The main objective of this program is to provide the teacher with the most advanced pedagogical tools and knowledge to offer students an educational environment that stimulates their creative potential and emotional development. This will enable them to achieve all-round development and make the most of their exceptional intellectual abilities.





“

Learn from anywhere and at any time of the day, thanks to the 100% online modality offered by this refresher program"



General Objectives

- ♦ Train the participant to recognize and initiate the detection of students who present characteristics compatible with the high capacity spectrum
- ♦ Make known the main characteristics of high capacities, as well as the pedagogical, scientific, and legal framework in which this reality is framed
- ♦ Show students the main assessment tools, as well as the criteria to complete the process of indentifying the specific educational needs required for high-capacity individuals
- ♦ Enable students in the use of techniques and strategies for educational intervention, as well as for response orientation in different extracurricular areas
- ♦ Develop in students the capacity to elaborate specific adaptations, as well as to collaborate or to promote integral programs within the educational project and the attention plan for diversity at a center
- ♦ Value the multidimensionality of high capacities and the need for multiprofessional interventions with flexible and adaptive methodologies from an inclusive vision
- ♦ Consolidate innovation and the application of new technologies as a central and useful element in the educational process
- ♦ Awaken in the student the necessary sensitivity and initiative to become a catalyst for the paradigmatic change that will make an inclusive educational system possible





Specific Objectives

- ♦ Plan actions and precise guidance to favor the development of each learning style
- ♦ Know the main obstacles and aspects to avoid in order not to compromise student normal development while , respecting their learning styles
- ♦ Discuss the consideration of learning styles and their repercussion on the different educational stages
- ♦ Understand the process of identifying specific educational needs regarding high-capacity individuals
- ♦ Plan the most frequent questions and answers regarding the detection of student potential
- ♦ Propose strategies and projects for initial screening in schools
- ♦ Differentiate between individual screening and group-classroom screening
- ♦ Review screening projects carried out in our environment
- ♦ Know the different screening protocols and tools used with teachers, students and families
- ♦ Apply screening instruments in close contexts

“

Implement practical resources in the classroom to prevent demotivation and hypermotivation in students”

03

Course Management

TECH has brought together in this Postgraduate Certificate a team of renowned teachers in the field of High Capacities, both for their educational training and their extensive professional experience, which includes the management of centers specializing in the support of people with outstanding intellectual abilities. With this group of professionals, educators participating in this program will be able to count on the guarantee of acquiring the necessary knowledge from experts in this field.





“

Benefit from a comprehensive and up-to-date syllabus developed by experts with expertise in inclusive education, with which you will apply standardized tests to assess emotions and creativity"

Management



Dr. Medina Cañada, Carmen Gloria

- ♦ Director of the Instituto Canario de Altas Capacidades (Canary Islands Institute of High Capacities)
- ♦ Psychologist and Speech therapist at the Asperger Association of the Canary Islands (ASPERCAN)
- ♦ Psychologist and Speech Therapist in Yoyi
- ♦ Psychologist and Speech Therapist at the Center for Audiology and Speech Therapy Studies
- ♦ Psychologist of minors in the Psychological Guidance Area at ANSITE
- ♦ Bachelor's PhD in Pedagogy, University of La Laguna
- ♦ Bachelor's Degree in Pedagogy, University of La Laguna
- ♦ Degree in Primary Education by University of La Laguna

Professors

Mr. Aznar Rodríguez, Francisco Javier

- ♦ Specialist in Psychopedagogy and High Capacities
- ♦ Neurosynchrony Manager (Alicante)
- ♦ Judicial Expert at the International Institute of High Capacities of the Community of Valencia
- ♦ Degree in Psychopedagogy from ULPGC
- ♦ Diploma in Primary School Education from the University of Las Palmas of Gran Canaria (ULPGC)
- ♦ Master's Degree in High Capacities from the CEU Cardenal Herrera University

Ms. Herrera Franquis, María del Carmen

- ♦ Director of the Canary Islands Psychological Center
- ♦ Director of the Canary Islands Institute of High-Capacity Individuals in Tenerife
- ♦ Teacher in university and postgraduate studies in Psychology
- ♦ Degree in Psychology
- ♦ Expert in the Psychological Approach to Personality Disorders in Childhood and Adolescence
- ♦ Member of: the National Network of Psychologists for the Psychological Attention to Victims of Terrorism of the Ministry of the Interior

Ms. Pérez Santana, Lirian Ivana

- ♦ Psychologist Specialized in High Capacities
- ♦ Director of the Instituto Canario de Altas Capacidades (Canary Institute of High Capacities)
- ♦ Guidance Counselor at IES Vega de San Mateo
- ♦ Guidance counselor at CPEIPS Nuestra Señora de las Nieves
- ♦ Bachelor's Degree in Pedagogy, University of La Laguna
- ♦ International Master's Degree in Forensic Psychology from the Spanish Association of Behavioral Psychology

Mr. Hernández Felipe, Eduardo

- ♦ Psychologist Expert in High Capacities and Social Intervention
- ♦ Psychologist Responsible for an Immediate Care Center
- ♦ Child and Adolescent Psychologist at DUO Center
- ♦ Psychologist at The Catholic Worker Farm
- ♦ Collaborator in the Canary Islands Institute of High Capacities
- ♦ Degree in Psychology from the University of La Laguna
- ♦ Master's Degree in Family Intervention from the University of Gran Canaria
- ♦ Master's Degree in General Health Psychology from the University of Valencia
- ♦ Master's Degree in High Abilities and Inclusive Education

Ms. Jiménez Romero, Yolanda

- ♦ Pedagogical advisor and external educational collaborator
- ♦ Academic Coordinator Online University Campus
- ♦ Territorial Director of the Extremeño-Castilla La Mancha Institute of High Abilities
- ♦ Creation of Educational Contents INTEF. Ministry of Education and Science
- ♦ Degree in Primary Education, English specialization
- ♦ Psychopedagogy. International University of Valencia
- ♦ Master's Degree in Neuropsychology of High Abilities
- ♦ Master's Degree in Emotional Intelligence. Specialist in NPL

Dr. Peguero Álvarez, María Isabel

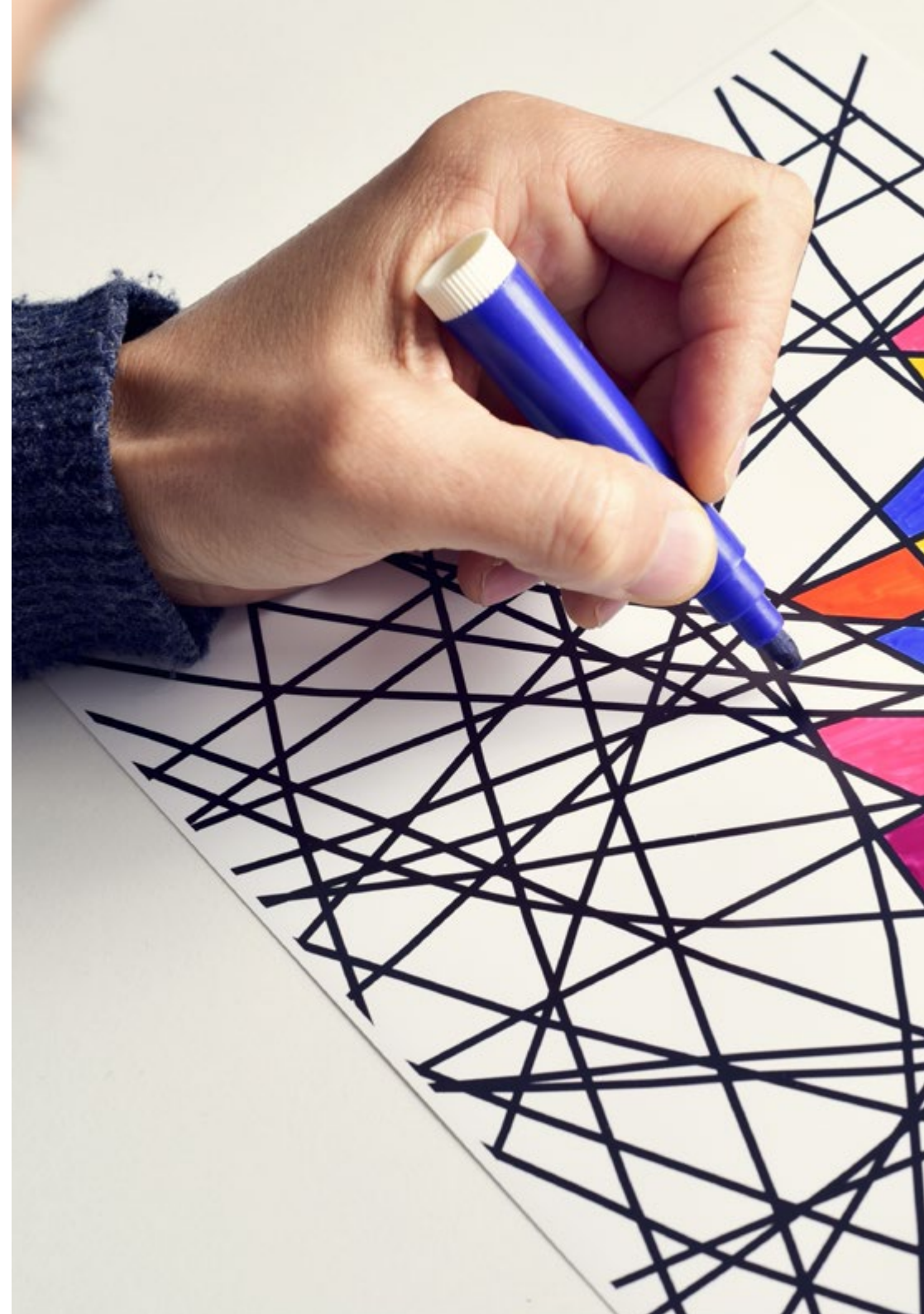
- ♦ Specialist in Family and Community Medicine in the Extremeño Health Service
- ♦ Family Physician with Pediatric duties in Primary School Care
- ♦ Coordinator of the Primary School team in the Extremadura Health Service
- ♦ Author of several publications related to high capacities and of the *Clinical Practice Guide in Primary School Care*
- ♦ Participation in various forums, congresses, and conferences related to high capacities

Ms. Rodríguez Ventura, María Isabel

- ♦ Director, Coordinator and Therapist at Gabinete Pedagógico Lanzarote SL
- ♦ Coordinator, Therapist and Head Pedagogue at Creciendo Yaiza Association
- ♦ Bachelor's Degree in Pedagogy, University of La Laguna
- ♦ Master's Degree in Intervention in Learning Difficulties from ISEP University
- ♦ Member of : the Canary Institute of High-Capacity Individuals Lanzarote delegation

Mr. Gris Ramos, Alejandro

- ♦ Technical Engineer in Computer Management
- ♦ CEO & Founder Club de Talentos
- ♦ CEO Persatrace, Online Marketing Agency
- ♦ Business Development Director at Alenda Golf
- ♦ Director. PI Study Center
- ♦ Director of Web Application Engineering Department at Brilogic
- ♦ Web programmer at Grupo Ibergest
- ♦ Software/web programmer at Reebok Spain
- ♦ Technical Engineer in Computer Management
- ♦ Master's Degree in Digital Teaching and Learning Tech Education
- ♦ Master's Degree in High Abilities and Inclusive Education
- ♦ Master' s Degree in E-Commerce
- ♦ Specialist in the latest technologies applied to teaching, digital marketing, web application development and Internet business





“

Take the opportunity to learn about the latest advances in this field in order to apply it to your daily practice"

04

Structure and Content

The contents integrated in this program have compiled the most relevant concepts in the field of creativity and emotional education. In this way, the teacher will experience a learning process that will delve into aspects such as emotional intelligence and the education of feelings, the concept of hyperemotivity and practical learning techniques. In order to achieve this, TECH provides a wide range of multimedia resources such as real case studies, which will be available anytime and anywhere, since all you need is a device with Internet access.





“

The Relearning approach, used in this program, will give you the opportunity to update yourself at your own pace and without time constraints"

Module 1. Creativity and Emotional Education in the Classroom

- 1.1. Emotional Intelligence and the Education of Emotions According to the Mayer and Salovey Model
 - 1.1.1. Introduction: Emotional Intelligence and the Education of Emotions According to the Mayer and Salovey Model
- 1.2. Other Emotional Intelligence Models and Emotional Transformation
 - 1.2.1. Emotional Competence Models
 - 1.2.2. Social Competence Models
 - 1.2.3. Multiple Models
- 1.3. Social-Emotional Competencies and Creativity by Level of Intelligence
 - 1.3.1. Social-Emotional Competencies and Creativity by Level of Intelligence
- 1.4. Concept of Emotional Quotient, Intelligence and Dyssynchrony Accommodation in High Intellectual Capacities
 - 1.4.1. Concept of Emotional Quotient, Intelligence and Dyssynchrony Accommodation in High Intellectual Capacities
- 1.5. Concept of Hyperemotivity
- 1.6. Current Scientific Studies on Creativity, Emotions, Self-Awareness and Intelligence
 - 1.6.1. Neuroscientific Studies
 - 1.6.2. Applied Studies
- 1.7. Practical Classroom Resources to Prevent Demotivation and Hyperemotivity
 - 1.7.1. Practical Classroom Resources to Prevent Demotivation and Hyperemotivity
 - 1.7.2. Factors Leading to Demotivation in the Classroom
 - 1.7.3. Motivational Resources
 - 1.7.4. Technique for Operational Learning
 - 1.7.5. Resources for Emotional Regulation





- 1.8. Standardized Tests to Assess Emotions and Creativity Creativity Tests and Quizzes
 - 1.8.1. Standardized Tests to Assess Emotions and Creativity
 - 1.8.2. Emotional Tests and Quizzes
 - 1.8.3. Creativity Tests and Quizzes
 - 1.8.4. Assessing Emotions
 - 1.8.5. Creativity Assessment
 - 1.8.6. Laboratories and Valuation Experiences
- 1.9. Inclusive Schools: Humanist Model and Emotional Education Interrelation
 - 1.9.1. Inclusive Schools: Humanist Model and Emotional Education Interrelation

“ Enhance your professional profile with a dynamic and highly effective update using teaching resources such as interactive summaries and simulation of real cases”

05

Methodology

This training program offers a different way of learning. Our methodology uses a cyclical learning approach: **Relearning**.

This teaching system is used, for example, in the most prestigious medical schools in the world, and major publications such as the **New England Journal of Medicine** have considered it to be one of the most effective.





“

Discover Relearning, a system that abandons conventional linear learning, to take you through cyclical teaching systems: a way of learning that has proven to be extremely effective, especially in subjects that require memorization"

At TECH Education School we use the Case Method

In a given situation, what should a professional do? Throughout the program students will be presented with multiple simulated cases based on real situations, where they will have to investigate, establish hypotheses and, finally, resolve the situation. There is an abundance of scientific evidence on the effectiveness of the method.

With TECH, educators can experience a learning methodology that is shaking the foundations of traditional universities around the world.



It is a technique that develops critical skills and prepares educators to make decisions, defend their arguments, and contrast opinions.

“

Did you know that this method was developed in 1912, at Harvard, for law students? The case method consisted of presenting students with real-life, complex situations for them to make decisions and justify their decisions on how to solve them. In 1924, Harvard adopted it as a standard teaching method”

The effectiveness of the method is justified by four fundamental achievements:

1. Educators who follow this method not only grasp concepts, but also develop their mental capacity, by evaluating real situations and applying their knowledge.
2. The learning process is solidly focused on practical skills that allow educators to better integrate the knowledge into daily practice.
3. Ideas and concepts are understood more efficiently, given that the example situations are based on real-life teaching.
4. Students like to feel that the effort they put into their studies is worthwhile. This then translates into a greater interest in learning and more time dedicated to working on the course.



Relearning Methodology

At TECH we enhance the case method with the best 100% online teaching methodology available: Relearning.

Our University is the first in the world to combine case studies with a 100% online learning system based on repetition, combining a minimum of 8 different elements in each lesson, which represent a real revolution with respect to simply studying and analyzing cases.



Educators will learn through real cases and by solving complex situations in simulated learning environments. These simulations are developed using state-of-the-art software to facilitate immersive learning.

At the forefront of world teaching, the Relearning method has managed to improve the overall satisfaction levels of professionals who complete their studies, with respect to the quality indicators of the best online university (Columbia University).

With this methodology we have trained more than 85,000 educators with unprecedented success in all specialties. All this in a highly demanding environment, where the students have a strong socio-economic profile and an average age of 43.5 years.

Relearning will allow you to learn with less effort and better performance, involving you more in your specialization, developing a critical mindset, defending arguments, and contrasting opinions: a direct equation to success.

In our program, learning is not a linear process, but rather a spiral (learn, unlearn, forget, and re-learn). Therefore, we combine each of these elements concentrically.

The overall score obtained by our learning system is 8.01, according to the highest international standards.



This program offers the best educational material, prepared with professionals in mind:



Study Material

All teaching material is produced by the specialist educators who teach the course, specifically for the course, so that the teaching content is really specific and precise.

These contents are then applied to the audiovisual format, to create the TECH online working method. All this, with the latest techniques that offer high quality pieces in each and every one of the materials that are made available to the student.



Educational Techniques and Procedures on Video

TECH introduces students to the latest techniques, with the latest educational advances, and to the forefront of Education. All this, first-hand, with the maximum rigor, explained and detailed for your assimilation and understanding. And best of all, you can watch them as many times as you want.



Interactive Summaries

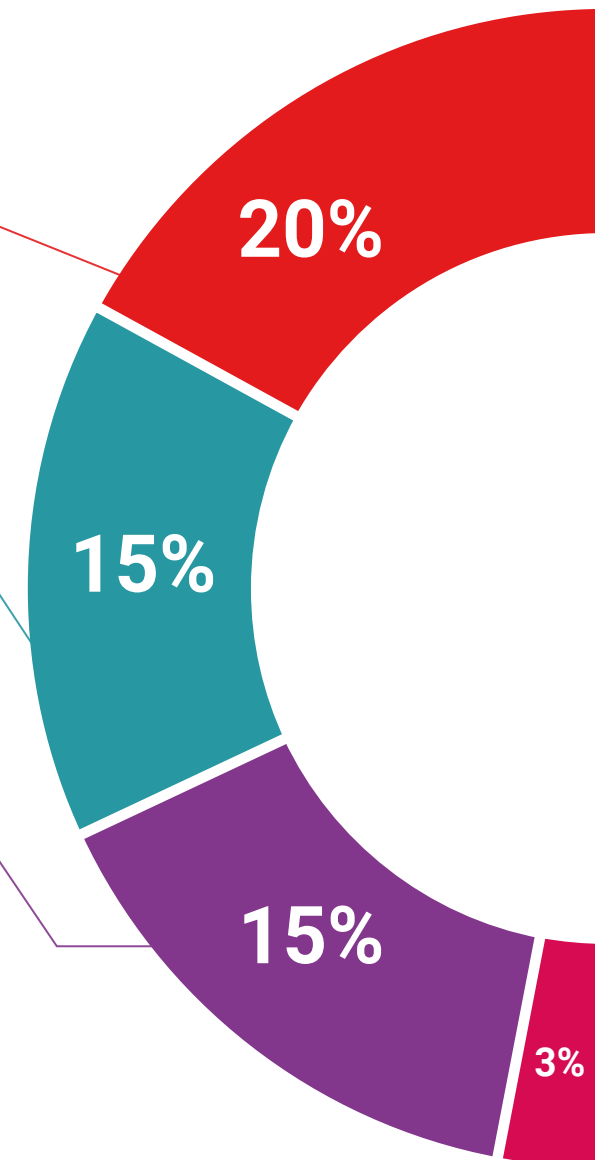
The TECH team presents the contents attractively and dynamically in multimedia lessons that include audio, videos, images, diagrams, and concept maps in order to reinforce knowledge.

This exclusive multimedia content presentation training Exclusive system was awarded by Microsoft as a "European Success Story".



Additional Reading

Recent articles, consensus documents and international guidelines, among others. In TECH's virtual library, students will have access to everything they need to complete their course.





Expert-Led Case Studies and Case Analysis

Effective learning ought to be contextual. Therefore, TECH presents real cases in which the expert will guide students, focusing on and solving the different situations: a clear and direct way to achieve the highest degree of understanding.



Testing & Retesting

We periodically evaluate and re-evaluate students' knowledge throughout the program, through assessment and self-assessment activities and exercises: so that they can see how they are achieving your goals.



Classes

There is scientific evidence suggesting that observing third-party experts can be useful.
Learning from an Expert strengthens knowledge and memory, and generates confidence in future difficult decisions.



Quick Action Guides

TECH offers the most relevant contents of the course in the form of worksheets or quick action guides. A synthetic, practical, and effective way to help students progress in their learning.



06

Certificate

The Postgraduate Certificate in Creativity and Emotional Education in the Classroom guarantees students, in addition to the most rigorous and up-to-date education, access to a Postgraduate Certificate issued by TECH Global University.



“

Successfully complete this program and receive your university qualification without having to travel or fill out laborious paperwork”

This program will allow you to obtain your **Postgraduate Certificate in Creativity and Emotional Education in the Classroom** endorsed by **TECH Global University**, the world's largest online university.

TECH Global University is an official European University publicly recognized by the Government of Andorra ([official bulletin](#)). Andorra is part of the European Higher Education Area (EHEA) since 2003. The EHEA is an initiative promoted by the European Union that aims to organize the international training framework and harmonize the higher education systems of the member countries of this space. The project promotes common values, the implementation of collaborative tools and strengthening its quality assurance mechanisms to enhance collaboration and mobility among students, researchers and academics.

This **TECH Global University** title is a European program of continuing education and professional updating that guarantees the acquisition of competencies in its area of knowledge, providing a high curricular value to the student who completes the program.

Title: **Postgraduate Certificate in Creativity and Emotional Education in the Classroom**

Modality: **online**

Duration: **6 weeks**

Accreditation: **5 ECTS**



future
health confidence people
education information tutors
guarantee accreditation teaching
institutions technology learning
community commitment
personalized service innovation
knowledge present
development languages
virtual classroom



Postgraduate Certificate
Creativity and Emotional
Education in the Classroom

- » Modality: online
- » Duration: 6 weeks
- » Certificate: TECH Global University
- » Credits: 5 ECTS
- » Schedule: at your own pace
- » Exams: online

Postgraduate Certificate

Creativity and Emotional Education in the Classroom