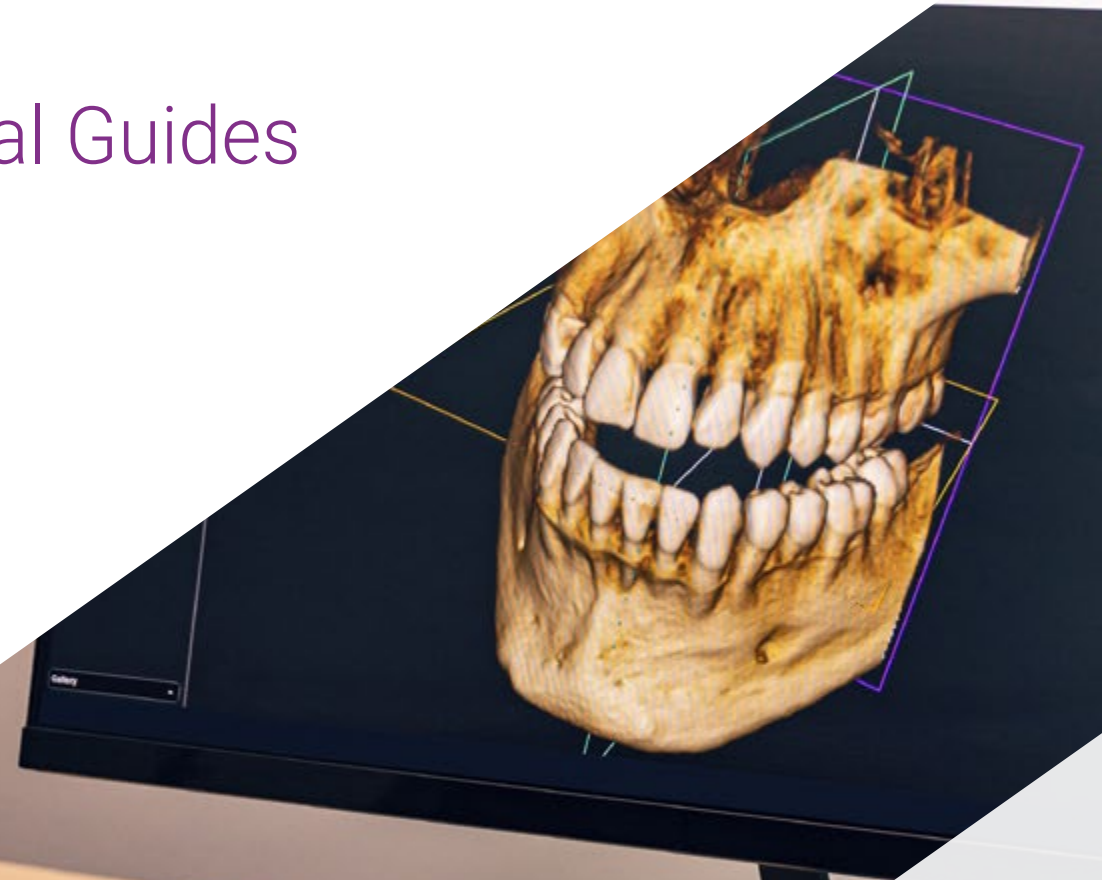


Postgraduate Certificate

Endodontic and Periodontal Guides





Postgraduate Certificate

Endodontic and Periodontal Guides

- » Modality: online
- » Duration: 6 weeks
- » Certificate: TECH Global University
- » Credits: 6 ECTS
- » Schedule: at your own pace
- » Exams: online

Website: www.techtute.com/us/dentistry/postgraduate-certificate/endodontic-periodontal-guides

Index

01

Introduction

p. 4

02

Objectives

p. 8

03

Course Management

p. 12

04

Structure and Content

p. 16

05

Methodology

p. 20

06

Certificate

p. 28

01

Introduction

In a world of constant change, it is a matter of course that the guidelines for each professional action are up-to-date over time. In this way, over the years, Endodontic and Periodontal guidelines have been up-to-date according to the new requirements of organizations such as the American Association of Endodontists and the American Academy of Periodontology. In this sense, in order for the professionals in the field to be able to offer effective care with great results, they must know about these documents and their recent modifications. In response to this demand, TECH has created the following program with the aim of providing students with the most up-to-date knowledge in the area. All of this in a convenient 100% online format, with audiovisual resources and complementary readings.



“

The 100% online mode of this program allows you to combine your daily routine with the acquisition of new knowledge"

The Endodontic and Periodontal Guidelines are documents that are constantly being up-to-date due to recent scientific research and academic studies. These establish the recommendations and standards of clinical practice for the diagnosis and treatment of oral diseases, so knowing their information is of vital importance for the dentist. In response to this demand, TECH has created the following program in which the graduate will be introduced to the most recent modifications and guidelines imposed by highly prestigious entities.

In this way, the syllabus of this program becomes an opportunity for professional updating, presenting the graduate with high-impact information provided by experts in the sector. In addition, it will delve into aspects of great importance such as requirements, the latest developments in the use of clinical tools, new digital tools and the proper procedure of intervention.

All this material will be hosted in the virtual campus, easily accessible from any device with an Internet connection. In addition, the graduates will find audiovisual resources, complementary readings and practical exercises developed with the Relearning methodology, which will place them in real and simulation scenarios.

This **Postgraduate Certificate in Endodontic and Periodontal Guides** contains the most complete and up-to-date scientific program on the market. The most important features include:

- ♦ The development of case studies presented by experts in Endodontic and Periodontal Guides
- ♦ The graphic, schematic, and practical contents with which they are created, provide scientific and practical information on the disciplines that are essential for professional practice
- ♦ Practical exercises where self-assessment can be used to improve learning
- ♦ Its special emphasis on innovative methodologies
- ♦ Theoretical lessons, questions to the expert, debate forums on controversial topics, and individual reflection assignments
- ♦ Content that is accessible from any fixed or portable device with an Internet connection



You will delve into dental and periodontal anatomy and its development from the new digital technologies"

“

You will face real and simulation cases, having to test your acquired knowledge”

You will delve into the virtual planning process of endodontic guide placement using 3D design software.

In addition to the informative content, there are the most up-to-date digital tools in the professional field.

The program's teaching staff includes professionals from the field who contribute their work experience to this educational program, as well as renowned specialists from leading societies and prestigious universities.

The multimedia content, developed with the latest educational technology, will provide the professional with situated and contextual learning, i.e., a simulated environment that will provide immersive education programmed to learn in real situations.

This program is designed around Problem-Based Learning, whereby the professional must try to solve the different professional practice situations that arise during the educational year. This will be done with the help of an innovative system of interactive videos made by renowned experts.



02 Objectives

For the development of this program, TECH has selected the academic topics of greatest interest and relevance within the sector. In this way, during the following weeks the professional will be presented with the most up-to-date and rigorous knowledge in the field, presented through audiovisual resources, complementary readings and practical exercises developed with the Relearning methodology. In this way, as you incorporate new knowledge, you will acquire new skills and abilities to enhance your professional profile.





“

This program will get you one step closer to your career goals"



General Objectives

- Increase the professional's knowledge of the application of digital technologies in the diagnosis, treatment and planning of clinical cases
- Know the techniques of digital orthodontics and computer-guided implant planning
- Develop skills in interdisciplinary communication and collaboration in teamwork, using digital technology as a tool
- Examine the application of acquired knowledge in clinical practice, in this way improving the quality of patient care





Specific Objectives

- ◆ Understand the basic concepts of digital flow in dentistry and its application in Endodontics and Periodontics
- ◆ Learn how to use digital tools for endodontic and periodontic planning, such as computed tomography (CT) and design software
- ◆ Know the techniques and protocols for endodontic and periodontic planning, including three-dimensional (3D) reconstruction of the dental and periodontal anatomy
- ◆ Design surgical and endodontic guides through the use of digital tools



You will be presented with information on digital image processing for virtual root canal planning in endodontic guides"

03

Course Management

One of TECH's priorities when designing its programs is the creation of a cadre of teachers who provide knowledge and experience. Therefore, for this Postgraduate Certificate, it has selected experts and specialists in endodontic and periodontal guides. They are prestigious professionals with excellent careers, who in addition to participating in the direction of the Postgraduate Certificate, have deposited in the study material their years of work and experience, so it is summarized in an exclusive and cutting-edge content.



A close-up photograph of a dental procedure, showing a hand holding a dental instrument over a patient's teeth. The image is partially obscured by a purple diagonal overlay.

“

You will be trained through high-impact audiovisual resources, designed by experts and specialists with several years of experience”

Management



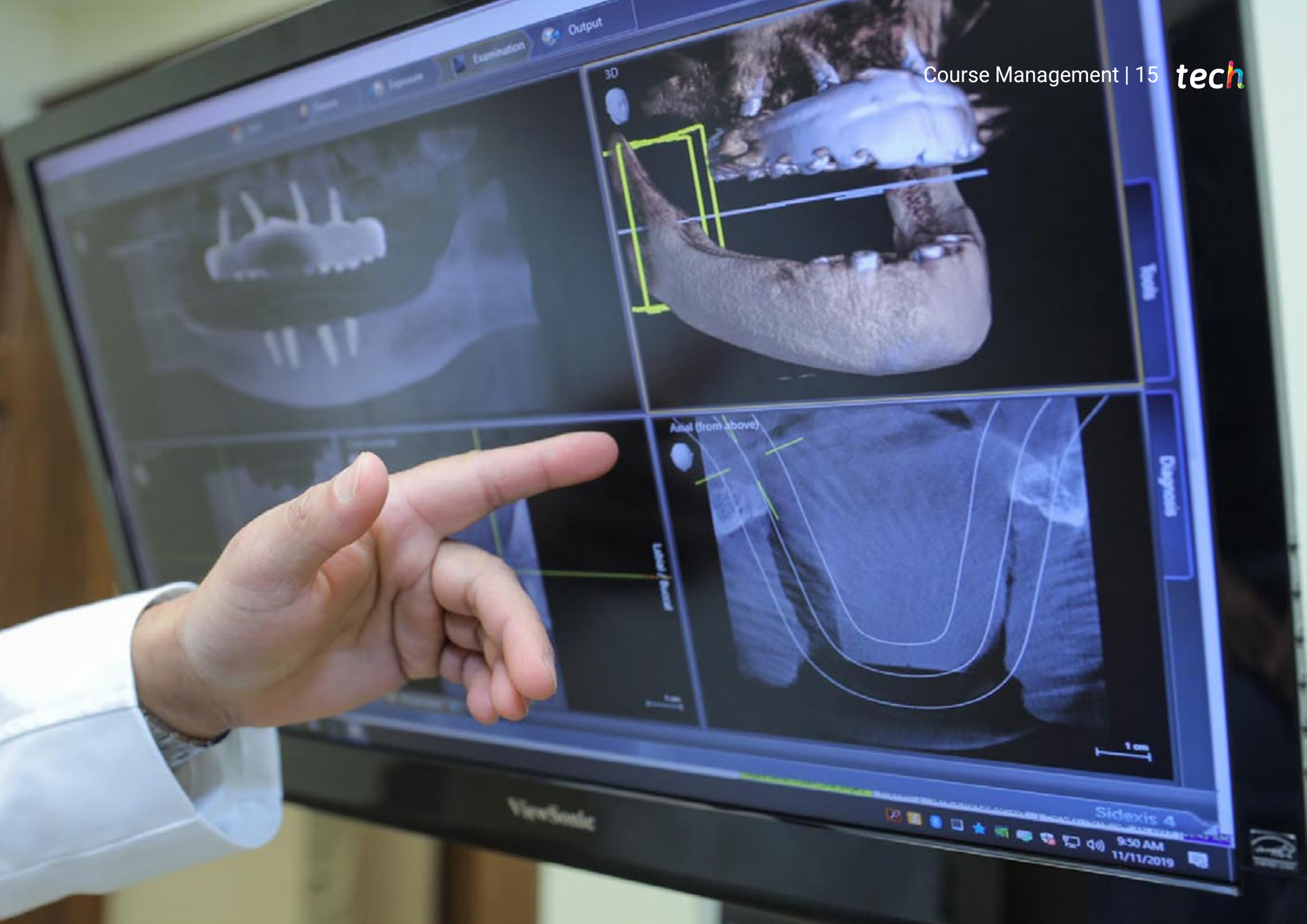
Dr. Ulman, Darío

- ◆ Dentist Specializing in Implant Dentistry and Orthodontics
- ◆ Dentist in own practice
- ◆ *International Intraoral Scanner* Trainer
- ◆ Speaker Corner FONA
- ◆ Director of training courses for dentists
- ◆ Degree in Dentistry



Dr. Roisentul, Alejandro

- ◆ Director of the Oral and Maxillofacial Surgery Unit of Ziv Medical Center
- ◆ Clinical Instructor, Bar-Ilan University School of Medicine
- ◆ Regional Delegate for Asia of the Latin American Association of Buccomaxillofacial Surgery and Traumatology
- ◆ President of the Israeli Association of Oral and Maxillofacial Surgeons
- ◆ Winner of numerous awards and honorable mentions



04

Structure and Content

A professional update must go hand in hand with the most rigorous and innovative educational content, so, following these parameters, TECH has selected the syllabus. Throughout the following weeks, the graduate will delve into aspects clearly linked to endodontics and periodontics, with special emphasis on their guides and implementation of digital tools. All this material will be hosted on the virtual campus, which can be accessed 24 hours a day and from any device with an Internet connection.



“

No pre-established schedules and from the place of your choice. You are just a click away to get trained quickly and effectively"

Module 1. Digital Flow Endodontic and periodontal guides

- 1.1. Endodontic Guides
 - 1.1.1. Virtual Planning of Endodontic Guidewire Placement Using 3D Design Software
 - 1.1.2. Assessment of the Accuracy and Effectiveness of Digital Flow for Endodontic Guidewire Placement
 - 1.1.3. Material Selection and 3D Printing Techniques for the Production of Endodontic Guides
 - 1.1.4. Use of Endodontic Guides for Root Canal Preparation
- 1.2. Import File in Endodontic Guides
 - 1.2.1. 2D and 3D Image File Processing for Virtual Planning of Endodontic Guidewire Placement
 - 1.2.2. Assessment of the Accuracy and Effectiveness of File Import in Endodontic Guide Planning
 - 1.2.3. Selection of 3D Design Software and File Formats for Import into Endodontic Guide Planning
 - 1.2.4. Customized Design of Endodontic Guides Using Imported Medical Image Files
- 1.3. Localization of the Canal in Endodontic Guides
 - 1.3.1. Digital Image Processing for Virtual Planning of Root Canal Location in Endodontic Guidewires
 - 1.3.2. Assessment of the Accuracy and Effectiveness of Root Canal Location in Endodontic Guide Planning
 - 1.3.3. Selection of 3D Design Software and File Formats for Root Canal Location in Endodontic Guide Planning
 - 1.3.4. Customized Design of Endodontic Guides Using Root Canal Location in Planning
- 1.4. Fixing the Endodontic Guide Ring
 - 1.4.1. Assessment of Different Types of Rings and Their Relationship to Endodontic Guidance Accuracy
 - 1.4.2. Selection of Materials and Techniques for the Fixation of the Ring in the Endodontic Guide
 - 1.4.3. Assessment of the Accuracy and Effectiveness of Ring Fixation in Endodontic Guidance
 - 1.4.4. Custom Design of the Ring Fixation on the Endodontic Guide Using 3D Design Software
- 1.5. Dental Anatomy and Periapical Structures in Endodontic Guides
 - 1.5.1. Identification of Key Anatomical Structures in the Planning of Endodontic Guides
 - 1.5.2. Anatomy of Anterior and Posterior Teeth and Its Implications in Endodontic Guide Planning
 - 1.5.3. Anatomy Considerations and Variations in Endodontic Guide Planning
 - 1.5.4. Dental Anatomy in the Planning of Endodontic Guides for Complex Treatments
- 1.6. Periodontal Guides
 - 1.6.1. Design and Production of Periodontal Guides Using Digital Planning Software
 - 1.6.2. Importing and Recording CBCT Image Data for Periodontal Guide Planning
 - 1.6.3. Periodontal Guide Fixation Techniques to Ensure Precision in Surgery
 - 1.6.4. Digital Work Flows for Bone and Soft-Tissue Graft Placement in Guided Periodontal Surgery
- 1.7. Import File in Periodontal Guides
 - 1.7.1. Types of Files Used in the Import of Digital Periodontal Guides
 - 1.7.2. Procedure for Importing Image Files for the Creation of Digital Periodontal Guides
 - 1.7.3. Technical Considerations for File Import in Digital Periodontal Guide Planning
 - 1.7.4. Selection of Suitable Software for Importing Files into Digital Periodontal Guides
- 1.8. Coronary Lengthening Guide Design in Periodontal Guides
 - 1.8.1. Definition and Concept of Coronary Lengthening Guide in Dentistry
 - 1.8.2. Indications and Contraindications for the Use of Coronary Lengthening Guides in Dentistry
 - 1.8.3. Procedure for the Digital Design of Coronary Lengthening Guidewires Using Specific Software
 - 1.8.4. Anatomical and Aesthetic Considerations for the Design of Coronary Lengthening Guides in Digital Dentistry

- 1.9. Stl Export in Periodontal Guides
 - 1.9.1. Dental Anatomy and Periodontal Structures Relevant to the Design of Periodontal and Endodontic Guides
 - 1.9.2. Digital Technologies Used in the Planning and Design of Endodontic and Periodontal Guides, such as Computed Tomography, Magnetic Resonance Imaging and Digital Photography
 - 1.9.3. Periodontal Guide Design
 - 1.9.4. Endodontic Guide Design
- 1.10. Dental Anatomy and Periodontal Structures
 - 1.10.1. Virtual Dental and Periodontal Anatomy
 - 1.10.2. Design of Customized Periodontal Guides
 - 1.10.3. Assessment of Periodontal Health Using Digital Radiographs
 - 1.10.4. Guided Periodontal Surgery Techniques

“

Get up-to-date with the most recent professional updates in the field of endodontics and periodontics”



05

Methodology

This academic program offers students a different way of learning. Our methodology uses a cyclical learning approach: **Relearning**.

This teaching system is used, for example, in the most prestigious medical schools in the world, and major publications such as the **New England Journal of Medicine** have considered it to be one of the most effective.





“

Discover Relearning, a system that abandons conventional linear learning, to take you through cyclical teaching systems: a way of learning that has proven to be extremely effective, especially in subjects that require memorization"

At TECH we use the Case Method

In a given situation, what should a professional do? Throughout the program, students will face multiple simulated clinical cases, based on real patients, in which they will have to do research, establish hypotheses, and ultimately resolve the situation. There is an abundance of scientific evidence on the effectiveness of the method. Specialists learn better, faster, and more sustainably over time.

With TECH you will experience a way of learning that is shaking the foundations of traditional universities around the world.



According to Dr. Gérvas, the clinical case is the annotated presentation of a patient, or group of patients, which becomes a "case", an example or model that illustrates some peculiar clinical component, either because of its teaching power or because of its uniqueness or rarity. It is essential that the case is based on current professional life, trying to recreate the real conditions in the dentist's professional practice.

“

Did you know that this method was developed in 1912, at Harvard, for law students? The case method consisted of presenting students with real-life, complex situations for them to make decisions and justify their decisions on how to solve them. In 1924, Harvard adopted it as a standard teaching method”

The effectiveness of the method is justified by four fundamental achievements:

1. Dentists who follow this method not only grasp concepts, but also develop their mental capacity by means of exercises to evaluate real situations and apply their knowledge.
2. Learning is solidly translated into practical skills that allow the student to better integrate into the real world.
3. Ideas and concepts are understood more efficiently, given that the example situations are based on real-life.
4. Students like to feel that the effort they put into their studies is worthwhile. This then translates into a greater interest in learning and more time dedicated to working on the course.



Relearning Methodology

At TECH we enhance the case method with the best 100% online teaching methodology available: Relearning.

This university is the first in the world to combine the study of clinical cases with a 100% online learning system based on repetition, combining a minimum of 8 different elements in each lesson, a real revolution with respect to the mere study and analysis of cases.

The student will learn through real cases and by solving complex situations in simulated learning environments. These simulations are developed using state-of-the-art software to facilitate immersive learning.



At the forefront of world teaching, the Relearning method has managed to improve the overall satisfaction levels of professionals who complete their studies, with respect to the quality indicators of the best online university (Columbia University).

With this methodology we have trained more than 115,000 dentists with unprecedented success, in all specialties regardless of the workload. Our pedagogical methodology is developed in a highly competitive environment, with a university student body with a strong socioeconomic profile and an average age of 43.5 years old.

Relearning will allow you to learn with less effort and better performance, involving you more in your training, developing a critical mindset, defending arguments, and contrasting opinions: a direct equation for success.

In our program, learning is not a linear process, but rather a spiral (learn, unlearn, forget, and re-learn). Therefore, we combine each of these elements concentrically.

The overall score obtained by TECH's learning system is 8.01, according to the highest international standards.



This program offers the best educational material, prepared with professionals in mind:



Study Material

All teaching material is produced by the specialists who teach the course, specifically for the course, so that the teaching content is highly specific and precise.

These contents are then applied to the audiovisual format, to create the TECH online working method. All this, with the latest techniques that offer high quality pieces in each and every one of the materials that are made available to the student.



Educational Techniques and Procedures on Video

TECH introduces students to the latest techniques, the latest educational advances, and to the forefront of medical techniques. All of this in direct contact with students and explained in detail so as to aid their assimilation and understanding. And best of all, you can watch the videos as many times as you like.



Interactive Summaries

The TECH team presents the contents attractively and dynamically in multimedia lessons that include audio, videos, images, diagrams, and concept maps in order to reinforce knowledge.

This exclusive educational system for presenting multimedia content was awarded by Microsoft as a "European Success Story".



Additional Reading

Recent articles, consensus documents and international guidelines, among others. In TECH's virtual library, students will have access to everything they need to complete their course.





Expert-Led Case Studies and Case Analysis

Effective learning ought to be contextual. Therefore, TECH presents real cases in which the expert will guide students, focusing on and solving the different situations: a clear and direct way to achieve the highest degree of understanding.



Testing & Retesting

We periodically evaluate and re-evaluate students' knowledge throughout the program, through assessment and self-assessment activities and exercises, so that they can see how they are achieving their goals.



Classes

There is scientific evidence suggesting that observing third-party experts can be useful.
Learning from an Expert strengthens knowledge and memory, and generates confidence in future difficult decisions.



Quick Action Guides

TECH offers the most relevant contents of the course in the form of worksheets or quick action guides. A synthetic, practical, and effective way to help students progress in their learning.



06

Certificate

The Postgraduate Certificate in Endodontic and Periodontal Guides guarantees students, in addition to the most rigorous and up-to-date education, access to a Postgraduate Certificate issued by TECH Global University.



“

*Successfully complete this program
and receive your university qualification
without having to travel or fill out
laborious paperwork"*

This program will allow you to obtain your **Postgraduate Certificate in Endodontic and Periodontal Guides** endorsed by **TECH Global University**, the world's largest online university.

TECH Global University is an official European University publicly recognized by the Government of Andorra ([official bulletin](#)). Andorra is part of the European Higher Education Area (EHEA) since 2003. The EHEA is an initiative promoted by the European Union that aims to organize the international training framework and harmonize the higher education systems of the member countries of this space. The project promotes common values, the implementation of collaborative tools and strengthening its quality assurance mechanisms to enhance collaboration and mobility among students, researchers and academics.

This **TECH Global University** title is a European program of continuing education and professional updating that guarantees the acquisition of competencies in its area of knowledge, providing a high curricular value to the student who completes the program.

Title: **Postgraduate Certificate in Endodontic and Periodontal Guides**

Modality: **online**

Duration: **6 weeks**

Accreditation: **6 ECTS**



*Apostille Convention. In the event that the student wishes to have their paper diploma issued with an apostille, TECH Global University will make the necessary arrangements to obtain it, at an additional cost.



Postgraduate Certificate

Endodontic and Periodontal Guides

- » Modality: online
- » Duration: 6 weeks
- » Certificate: TECH Global University
- » Credits: 6 ECTS
- » Schedule: at your own pace
- » Exams: online

Postgraduate Certificate

Endodontic and Periodontal Guides

